

DS RAZOR

for eDirectory/NDS and NetWare

Interactive Management and Reporting for
eDirectory/NDS and NetWare File Systems

Ready-to-Run Applets

Visual Click Software, Inc.

Copyrights

This manual contains proprietary information that is protected by copyright. The information in this manual is subject to change without notice. No part of this manual may be reproduced or transmitted in any form or by any means, electronic or mechanical, including photocopying and recording, for any purpose other than the licensee's personal use without prior written permission of Visual Click Software. The software described in this manual is furnished under a license granted by Visual Click Software to the licensee. This software may be used or copied only in accordance with the terms of the license agreement.

© 2011 Visual Click Software, Inc. **All rights reserved.**

Trademarks

DSRAZOR® and Visual Click® are registered trademarks of Visual Click Software, Inc. Novell®, NetWare®, NDS®, ConsoleOne®, GroupWise®, ZENworks®, and BorderManager® are registered trademarks and eDirectory™, NetWare Loadable Module™, NLM™, and Client32™ are trademarks of Novell, Inc. Microsoft® and Windows® are registered trademarks of Microsoft Corporation in the United States and other countries. Other marks cited in this document are the property of their respective owners.

Patents

U.S. Patent No. 6,438,742

Issue Date: August 20, 2002

Documentation Conventions

Special information in this manual is presented using the following conventions:

- **Bold** text indicates commands, command-line options, and interface controls, such as the names of icons, menus, menu items, buttons, checkboxes, and tabs.
- *Italic* text indicates variables that must be replaced with a value. It also indicates book titles and emphasized terms.
- `Monospace` text indicates data to enter, filenames, and code examples.

NOTE:	Provides information that emphasizes or supplements important points in the main text.
IMPORTANT:	Provides information essential to the completion of a task. Do not disregard an important note.

Contact Us

Thanks for using DSRAZOR. Visual Click Software is committed to the ongoing support of its products. For information and the latest downloads of the DSRAZOR product, see the website at <http://www.visualclick.com/>. For information, help, and to report problems associated with this product, or if needing features or functionality that are not currently offered by Visual Click Software, contact the customer support team at support@visualclick.com. To purchase additional licenses, contact the sales team at sales@visualclick.com.

Contact us at the following mailing address:

Visual Click Software, Inc.
P.O. Box 161657
Austin, TX 78716

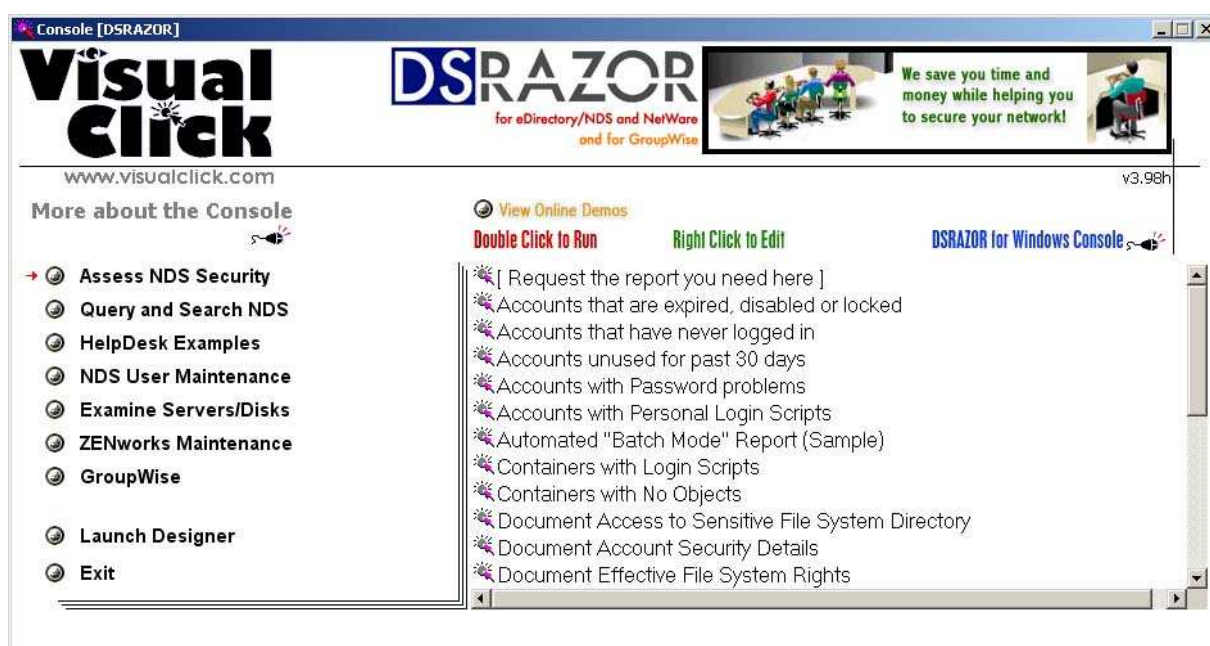
Pubrev 092711

Introduction

DSRAZOR is an authoring tool that allows you to create network management applications called **applets**. You do not need to know programming or do any scripting. Instead, DSRAZOR uses drag-and-drop controls that you arrange within a familiar tree structure to create applets that perform various tasks.

More than 150 pre-designed applets are included with DSRAZOR for eDirectory/NDS and NetWare. These applets perform such tasks as listing inactive user accounts and optionally deleting them. DSRAZOR helps you design new interactive applets or customize the standard applets to your needs.

When you first use DSRAZOR for eDirectory/NDS and NetWare, you are presented with the **Console**, which contains a menu of the predefined, ready-to-run applets.



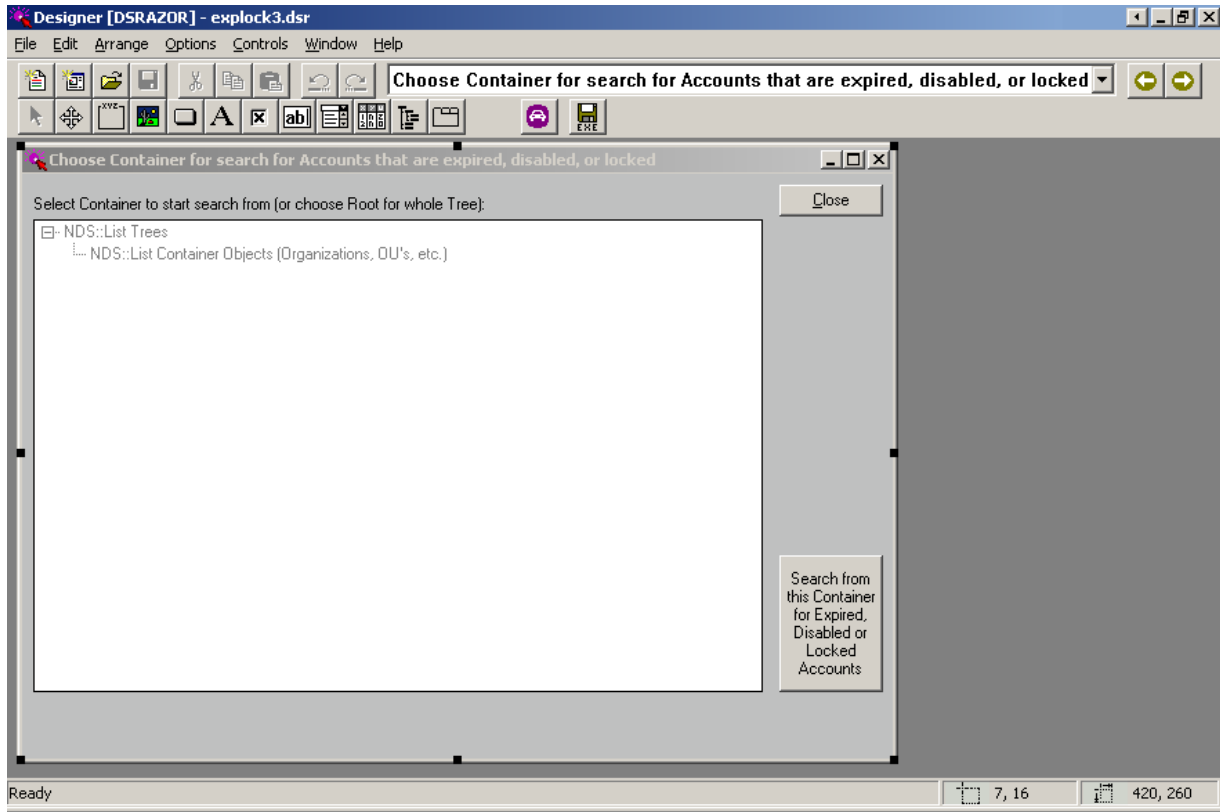
DSRAZOR for eDirectory/NDS and NetWare Console

The eDirectory/NDS and NetWare product includes everything in the DSRAZOR **Console**, **except** the following:

- The applets listed under the GroupWise Menu Header
- The Import Users + GW Dist List Membership from CSV applet (which requires tokens from **both** DSRAZOR for GroupWise and DSRAZOR for eDirectory/NDS and NetWare)

Each applet in the **Console** showcases specific features of DSRAZOR for eDirectory/NDS and NetWare. The applets run as Windows applications; you can customize an applet functionally and visually using DSRAZOR's **Designer** tool. Since most applets rely on the user's permissions to complete their duties, your user account must be sufficiently privileged for your results to be complete.

DSRAZOR for eDirectory/NDS and NetWare Ready-to-Run Applets



DSRAZOR for eDirectory/NDS and NetWare Designer

The DSRAZOR for eDirectory/NDS and NetWare **Designer** enables you to create your own applets. The **Designer** provides numerous modular tools (called **services**) that can be used and combined to construct or modify applets.

You can perform any of the following tasks using the DSRAZOR for eDirectory/NDS and NetWare **Designer**:

- Edit an applet so that data is presented in a particular manner
- Merge applets by importing one into the other
- Modify the list of applets displayed in the **Console**
- Display your organization's logo or another graphic in the applets

DSRAZOR applets are saved as *.DSR files. When you select an applet to use in the **Console**, the executable file DSRRUN.EXE is launched with the selected .DSR. You can open any applet with the **Designer** and save the .DSR as an EXE file that can be distributed independently of the **Console**.

Note that you can ask our technical support staff to provide training or assist you with using the **Designer**. Or you can use our Create My Solution service to have our technical support staff customize applets for you.

DSRAZOR for eDirectory/NDS and NetWare Ready-to-Run Applets

Descriptions of eDirectory/NDS and NetWare Ready-to-Run Applets

The following sections describe the applets found in the DSRAZOR for eDirectory/NDS and NetWare **Console**.

NOTE: DSRAZOR for eDirectory/NDS and NetWare ready-to-run applets enable you to turn any list of results into an instant report. Right-clicking over a list of results allows you to immediately save/export or print the results. This feature is available in every DSRAZOR for eDirectory/NDS and NetWare applet.

The applets are ordered in this section as they are in the **Console**:

- [Assess NDS Security](#)
- [Query and Search NDS](#)
- [HelpDesk Examples](#)
- [NDS User Maintenance](#)
- [Examine Servers/Disks](#)
- [ZENworks Maintenance](#)

As you use the **Console**, you will notice the following option in each section:

[Request the Report you need here]

The applets packaged with DSRAZOR for eDirectory/NDS and NetWare can be readily customized to meet your specific needs. Once you are familiar with the services and control objects used in the applets, you will be able to modify or create almost any solution you need in less than 10 minutes. Double-click this "Request the Report you need" option for information about our Create My Solution service where you can ask for assistance to build an applet or request that Visual Click's Technical Support Team create the applet for you.

DSRAZOR for eDirectory/NDS and NetWare Ready-to-Run Applets

Category: Assess NDS Security

The applets in this section are useful for assessing and maintaining your eDirectory/NDS security. See Visual Click Software's website (<http://www.visualclick.com/>) for information about our DSMETER for NetWare product for additional eDirectory/NDS/NetWare security and historical auditing features.

Accounts That Are Expired, Disabled or Locked

[EXPLOCK4.DSR]

Use this applet to find eDirectory/NDS accounts that are expired, disabled or locked. This applet allows you to select which container level of an eDirectory/NDS Tree you want to search from.

Accounts That Have Never Logged In

[NOLOGIN4.DSR]

Use this applet to find eDirectory/NDS user accounts that have never had a login. This applet allows you to select which container level of an eDirectory/NDS Tree you want to search from.

Accounts Unused for Past 30 Days

[NOLGN30A.DSR]

Use this applet to find eDirectory/NDS user accounts that have logged in at some time, but not in the past 30 days. This applet allows you to select which container level of an eDirectory/NDS Tree you want to search from.

Accounts with Password Problems

[PWDPROB1.DSR]

Use this applet to find eDirectory/NDS user accounts that have one of the following irregularities:

- Minimum password length is not set.
- No password is required.
- Expiration interval has not been set or is greater than 30 days.
- Expiration date/time has already expired.
- The minimum password length is less than 8 characters.

The criteria can be edited in the **Designer** to fit your organization's password standards.

This applet allows you to select which container level of an eDirectory/NDS Tree you want to search from.

Accounts with Personal Login Scripts

[PERSLGN1.DSR]

Use this applet to find eDirectory/NDS user accounts with a personal login script. This applet allows you to select which container level of an eDirectory/NDS Tree you want to search from.

Automated "Batch Mode" Report (Sample)

[OTFCSV3.DSR]

DSRAZOR for eDirectory/NDS and NetWare Ready-to-Run Applets

This applet searches for users who have not logged in for 30 days and sends the results directly out to a TXT file. This serves as a general example of an "batch mode" applet that can be automated with a task scheduler.

This applet does not display the results to the user. It automatically creates the file **SAMPLE1.CSV** in the directory from which this applet was run.

This serves as an example showing that any applet can save its output to a file without first displaying it onscreen. Sending output directly to a file can save time for large reports, and you can set it up to run unattended (like this applet) or scheduled (for example, as an **EXE** using Windows Task Scheduler).

Many DSRAZOR applets can be changed to run in Batch Mode for automation. Contact Visual Click's Tech Support Team if you would like assistance in setting up this function.

Containers with Login Scripts

[**CNTNLGN1.DSR**]

Use this applet to find eDirectory/NDS containers with a login script. This applet allows you to select which container level of an eDirectory/NDS Tree you want to search from.

Containers with No Objects

[**CNTNOA.DSR**]

Use this applet to find eDirectory/NDS containers that are empty. This applet allows you to select which container level of an eDirectory/NDS Tree you want to search from.

Document Access to Sensitive Directory (Linux only)

[**PRIVHER7LX.DSR**]

This applet finds all users, groups and containers who have access to the selected directory and what rights they have. This applet is for Linux (there is a separate applet for NetWare).

Document Access to Sensitive Directory (NetWare only)

[**PRIVHER7NW.DSR**]

This applet finds all users, groups, and containers that have access to the selected directory and what rights they have. Then you can highlight an object that has rights to see how their rights were derived (directly, from group membership, security equivalence, or other). This applet is for NetWare (there is a separate applet for Linux).

Document Account Security Details

[**ACTSTR.DSR**]

Lists users and the following security information:

- Enabled/disabled status
- Login-time restrictions (yes/no)
- Presence of a personal login script
- Number of maximum login attempts (concurrent connections)
- Station restrictions (network address restriction)
- Intruder lockout status
- Account expiration date

DSRAZOR for eDirectory/NDS and NetWare Ready-to-Run Applets

- Time/date of last login

Select the container level you want to search from, or choose [Root] to list all users in the eDirectory/NDS Tree.

NOTE: You can modify this applet in the **Designer** to add more columns and/or to add buttons that change the values of any of these attributes for one user, multiple users, or all users displayed.

Document Effective File System Rights

[DOCEFF8.DSR]

This applet reports effective file system rights. First it creates a CSV file that contains the effective file system rights for all objects, organized by directory. Then there is an optional step to select Users and Groups that you may want to look up in the CSV file to get a new report that is organized by User/Group (instead of by directory). You can now select multiple Users/Groups, or select all Users/Groups. Currently the applet is set to search 2 directory levels deep. The directory depth can be changed in the **Designer**, but searching more levels will take longer to run.

Document Organizational Roles

[ORGROLE1.DSR]

Lists user objects (within an eDirectory/NDS Tree or container) and their organizational roles, or lists organization roles and their members.

Document Password Settings Strength

[PWDSTR.DSR]

Lists users and conveniently displays the following information:

- Whether password is required
- Whether password must be unique
- Minimum password length
- Password expiration interval
- Whether user can change own password
- Maximum number of grace logins

NOTE: This applet can be customized in the **Designer** to add more columns and/or to add buttons that change the password attribute values for one user, multiple users, or all users.

Document Security Equivalences

[SEC-EQU2.DSR]

Lists all objects (or just users) that have security equivalences to anyone (or just to Admin). The rules can be modified in the **Designer** if you want to search for security equivalence to other specific users or objects.

Find "Elevated Users" (sample)

[ELEVATED1.DSR]

DSRAZOR for eDirectory/NDS and NetWare Ready-to-Run Applets

This applet finds Elevated Users, which is defined in this example as users who have any combination of the following:

- High level (Supervisor/Write/Create/Erase/Modify/Access Control) effective file system rights to SYS:SYSTEM, SYS:APACHE, or SYS:APACHE2 on any server.
- High level (Supervisor/Write/Create/Rename/Delete/Add Self) effective eDirectory privileges to other objects in the Tree (not themselves).
- They are explicitly Console Operator of any server.

If you want different criteria, it may be possible to change the applet accordingly.

This applet and some other applets have the ability to re-use an ObjectList file that lists the objects in your Tree. The applet defaults to NOT re-using the ObjectList file, so that each time you run the applet the ObjectList is current and includes objects that were recently created in your Tree. However, if you have a scenario where you would like to re-use the ObjectList file, the applet can be modified in the Designer to specify a name and location for an ObjectList file that would be re-used until you delete the file. One scenario where it might be desirable to re-use the ObjectList file to save time would be if you are running several reports in the same day and know that no new objects will be created in your Tree during the time that you are running the reports.

Find Accounts Unused for 30, 90, or X Days

[3090E.DSR]

This applet allows you to see accounts that have not logged in for 30, 90, or X days or never logged in, or expired or disabled accounts. You can opt to smart delete accounts which will delete the NDS Account, home directory structure, and GroupWise account. If there is a GroupWise account present you have the option to delete it either via your GW client on your workstation or to delete it via copying the GW 5.5 administrator DLLs into your DSRAZOR directory.

Find Users who are Console Operators of the Servers

[CONOP3.DSR]

This applet has three different ways of searching the Tree for explicitly assigned Console Operators of the servers. The first method organizes the report by Server - it shows the Users explicitly assigned as Console Operators plus the Groups explicitly assigned as Console Operators. The second method organizes the report by User - it shows only the Users explicitly assigned as Console Operators. The third method organizes the report by User - it shows the Users who are Console Operators, the Users who are security equivalent to them, plus the members of any Groups that are Console Operators.

How Were File System Rights Obtained

[TRUSTWAY2.DSR]

This applet will allow you to immediately derive how an NDS User or any other type of NDS Object obtained rights to the selected NetWare Directory or Volume.

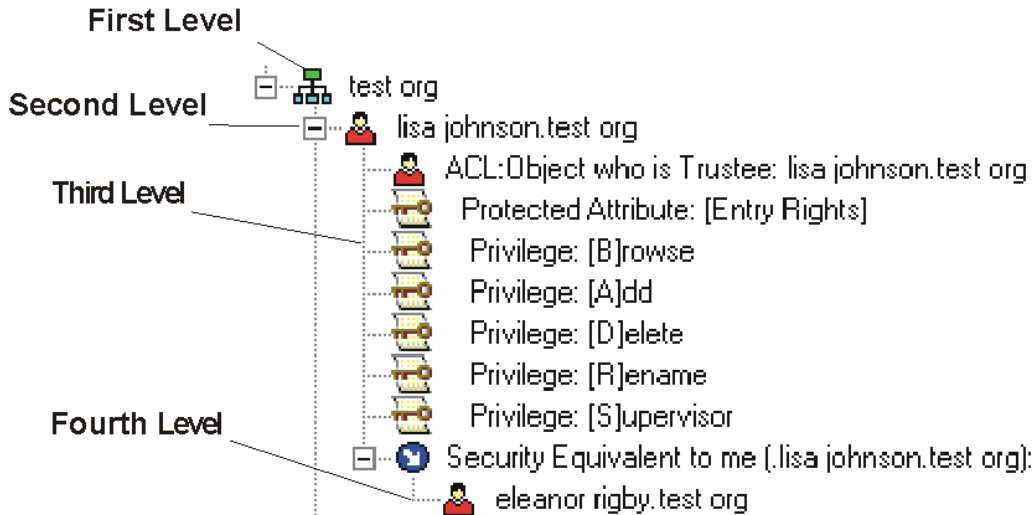
Objects (All) with NDS S or W Rights

[S_W_NDS4.DSR]

DSRAZOR for eDirectory/NDS and NetWare Ready-to-Run Applets

This applet lists all eDirectory/NDS objects that have trustees with [S]upervisor or [W]rite privileges as well as what those privileges are. It also shows who is security equivalent to the objects that have [S] or [W] privileges.

NOTE: This applet does **not** list objects that are their own trustees.



TreeView of Objects with Privileges

Objects (All) with NDS S, C or W Rights

[S_W_C-ALL1.DSR]

This applet will find all eDirectory objects that have Trustees with Supervisor or Create or Write privileges to other objects in the Tree. It also shows who is security equivalent to the objects that have the Supervisor or Create or Write privileges. The applet will NOT show objects who are only trustee to themselves. Note that in the display "[A]dd" means Create, and "[A]Add Self" means Add Self.

Objects (Container) with NDS S or W Rights

[S_W_NDS6.DSR]

This applet lists all eDirectory/NDS container objects that have trustees with [S]upervisor or [W]rite privileges as well as what those privileges are. Refer to the figure entitled "TreeView of Objects with Privileges".

- **First Level of List:** eDirectory/NDS container objects with [S] or [W] trustees
- **Second Level of List:** eDirectory/NDS objects that are [S] or [W] trustees
- **Third Level of List:** The specific eDirectory/NDS privileges that these objects have
- **Fourth Level of List:** Users (or others) who have security equivalence to the object at the second level and, therefore, are also [S] or [W] trustees

NOTE: This applet does **not** list objects that are their own trustees.

DSRAZOR for eDirectory/NDS and NetWare Ready-to-Run Applets

Objects (Container) with NDS S, C or W Rights

[SWC_NDS2.DSR]

This applet lists all eDirectory/NDS container objects that have trustees with [S]upervisor, [C]reate or [W]rite privileges as well as what those privileges are. Refer to the figure entitled "TreeView of Objects with Privileges".

- **First Level of List:** eDirectory/NDS container objects with such trustees
- **Second Level of List:** eDirectory/NDS objects that are trustees
- **Third Level of List:** What specific eDirectory/NDS privileges they have
- **Fourth Level of List:** Users (or others) who have security equivalence to the object at the second level and, therefore, are also [S] or [W] or [C] trustees

NOTE: This applet does **not** list objects that are their own trustees.

Objects That Have an IRF Defined

[IRFDEF1.DSR]

This applet lists all eDirectory/NDS objects with an Inherited Rights Filter (IRF).

Set File System Rights + Create Directory

[MDFSR.DSR]

This applet allows you to create new file system paths on multiple volumes. Once you have created these paths, you can assign file system trustees for existing or newly created directories.

Set File System Rights for Existing Directory

[FSR.DSR]

This applet resets file system rights to eDirectory/NDS objects in existing directories.

Set File System Rights of All Subdirectories

[MASSFSR.DSR]

This applet assigns the same file system rights to all existing file system trustees in the immediate subdirectories of a selected directory (file system rights in the **selected** directory are excluded). A common use for this applet is the removal of Access Control from many home directories at once.

Where Is Account an NDS Trustee

[WHEREIS.DSR]

This applet enables you to define a search for any eDirectory/NDS object that has a **specified** object as a trustee. All trustee assignments are returned - even attribute-specific ones. "Amyk.fin.isw" is just an example; the applet can be modified to look for other users.

IMPORTANT: To change the user queried, you must edit this applet in the **Designer**.

Who Has Access to a Specific File

[AUTO5.DSR]

DSRAZOR for eDirectory/NDS and NetWare Ready-to-Run Applets

This applet has two options for looking at effective file system rights. The first method will show only the list of users who have HIGH LEVEL effective file system rights (S WCEM A) to the file on any server. The second method will show users who have ANY effective rights (SRWCEMFA) to the file, plus it will also show what rights they have. AUTOEXEC.NCF is just an example, the applet can be modified in the **Designer** to look at a different file instead.

Who Has High Level Effective eDirectory Privileges to other Objects

[EDIRPRIV1.DSR]

This applet finds users who have any combination of the following eDirectory Privileges to other objects in the Tree (not themselves):

- High Level (Supervisor/Write/Create/Rename/Delete/Add Self) effective eDirectory privileges

This applet and some other applets have the ability to re-use an ObjectList file that lists the objects in your Tree. The applet defaults to NOT re-using the ObjectList file, so that each time you run the applet the ObjectList is current and includes objects that were recently created in your Tree. However, if you have a scenario where you would like to re-use the ObjectList file, the applet can be modified in the **Designer** to specify a name and location for an ObjectList file that would be re-used until you delete the file. One scenario where it might be desirable to re-use the ObjectList file to save time would be if you are running several reports in the same day and know that no new objects will be created in your Tree during the time that you are running the reports.

Who Has High Level Effective File System Rights to a specific Directory

[SYSSYSTEM1.DSR]

This applet uses the SYS:SYSTEM directory as an example of finding who has high level effective file system rights (NOT read or browse) to a specified file. It finds users who have any combination of:

- Supervisor/Write/Create/Erase/Modify/Access Control effective file system rights to SYS:SYSTEM on any server

The applet can be changed in the **Designer** to look for other directories, such as SYS:ETC or DATA:Finance. It can look for who has rights to just one directory, or multiple directories can be listed and checked in the same scan.

This applet and some other applets have the ability to re-use an ObjectList file that lists the objects in your Tree. The applet defaults to NOT re-using the ObjectList file, so that each time you run the applet the ObjectList is current and includes objects that were recently created in your Tree. However, if you have a scenario where you would like to re-use the ObjectList file, the applet can be modified in the **Designer** to specify a name and location for an ObjectList file that would be re-used until you delete the file. One scenario where it might be desirable to re-use the ObjectList file to save time would be if you are running several reports in the same day and know that no new objects will be created in your Tree during the time that you are running the reports.

DSRAZOR for eDirectory/NDS and NetWare Ready-to-Run Applets

Category: Query and Search NDS

The applets in this section are useful for querying and searching your eDirectory/NDS structure.

Document BorderManager Access Rules

[BM2.DSR]



This applet can assist you in documenting BorderManager access rules for eDirectory/NDS containers and NetWare servers.

Document File Trustee Assignments

[USERTR4.DSR]

This applet locates all eDirectory/NDS users/groups in a selected container and lists all of their explicitly assigned file system rights. All eDirectory/NDS volumes in your tree will be located, and you may save the volume list for later use so that you do not have to rebuild the list each time you want to check file system rights. If you do not want to search all volumes, you may edit the volume list to specify which volumes you do want to include.

Document Group Membership by Group Name

[GLISTA.DSR]

This applet finds groups in an eDirectory/NDS Tree and lists their members. Select a container to display the groups in it.

Document Group Membership by User Name

[USERGM1.DSR]

This applet searches for and lists users in selected containers and shows their group memberships.

Document GroupWise Distribution List Membership by List

[GWDLDOC2.DSR]

This applet displays the members of a selected GroupWise distribution list.

Document GroupWise Distribution List Membership by User

[GWDLBYNDS.DSR]

DSRAZOR for eDirectory/NDS and NetWare Ready-to-Run Applets

This applet lists all eDirectory/NDS Users in or beneath the selected Container that have a GroupWise Post Office defined and shows what GroupWise Distribution Lists they belong to. This applet style requires licenses for both products - DSRAZOR for GroupWise and DSRAZOR for eDirectory/NDS and NetWare. So this particular applet is for customers who have both products.

If you only have DSRAZOR for GroupWise (not DSRAZOR for eDirectory/NDS and NetWare), then use the applets called "4.View Dist. List Membership per user" and "5.Find Users not belonging to any Distribution Lists" instead. Both applets are in the GroupWise section of the DSRAZOR Console.

If you only have DSRAZOR for eDirectory/NDS and NetWare (not DSRAZOR for GroupWise), then use the applet called "GroupWise User's Dist. List Mgmt" instead. It is in the Helpdesk Examples section of the DSRAZOR Console.

Document Trustees by Directory

[TRBYDIR5 .DSR]

This applet displays directories and the objects that have (explicitly) Assigned File System Rights to those directories. The applet is currently set to search 4 directory levels beneath the starting directory, but if needed the directory depth can be changed in the **Designer**.

Find Accounts with Expiring Passwords

[PWDEXP2 .DSR]

Finds users whose password will expire within 24 hours, or 7-14 days from now, or within X days. To change the time span, edit this applet in the **Designer**.

Find Duplicate NDS User Accounts

[USERDUPS .DSR]

Produces a list of all users in your eDirectory/NDS Tree. Click **Find Duplicates in List** to reduce the list to just those user accounts with duplicate common names (CN).

Find Home Directories with No Trustees

[HDNOTRST2 .DSR]

This applet will find Home Directories with no Trustees. It also has the option of deleting the directories.

GroupWise Users and Their FIDs

[GWFIDB2 .DSR]

This applet finds all GroupWise users in a selected container and lists the following information about them:

- GroupWise visibility
- FID
- Mailbox expiration
- Post office

Login Scripts - Archive

[ARCHLS .DSR]

This applet archives login scripts from users, containers, profiles, etc., to a *.CSV file.

DSRAZOR for eDirectory/NDS and NetWare Ready-to-Run Applets

NDS Partition Status Report

[PARTSTAT2.DSR]

This applet searches for eDirectory/NDS Servers beginning from the selected Container. It lists the server partitions and their data, including if there were any errors during the most recent synchronization.

Raw NDS Object View

[RAWNDS1.DSR]

This applet exposes all attributes and technical details of the selected eDirectory/NDS object.

Search by GroupWise FID

[GWFIDS.DSR]

This applet queries eDirectory/NDS objects by GroupWise FID or partial string.

Search for Any Object by Name

[SRCH1.DSR]

This applet queries eDirectory/NDS objects by full name or partial string.

Search for Users with Network Address(es)

[NETSRCH1.DSR]

This applet lists all users in a container branch who have a network address and displays number of network addresses found, the first three network addresses, and last login time/date. You can edit this applet in the **Designer** to display more than three addresses.

Simple User Details View

[USERW6.DSR]

Displays all users in a selected Container and their Group memberships, explicit/direct file system Trustee assignments, and ZEN/NAL application associations. This applet can be modified to show different information about the users (titles, departments, etc).

User Creation Time Report

[CREATET.DSR]

This applet lists user objects and their creation, last modified, and last login times/dates.

User Information Report

[USERINFO1.DSR]

This applet shows users and information about them - full name, department, title, location, email address, last login, eDirectory status, phone numbers, fax numbers, group memberships, security equivalences, and descriptions. If there is more than one value for the attribute, the values are separated by a pipe character (|). The applet can be edited in the **Designer** to show different attributes of the users.

DSRAZOR for eDirectory/NDS and NetWare Ready-to-Run Applets

User Phone Number Search

[PHONE1.DSR]

This applet finds a specified user and displays that user's phone number. This applet serves as a sample of any applet that searches for user objects and displays attributes. To search for or display different user attributes, edit this applet in the **Designer**.

DSRAZOR for eDirectory/NDS and NetWare Ready-to-Run Applets

Category: HelpDesk Examples

Technically, all applets can be HelpDesk solutions. However, the applets in this section are especially suited for this purpose.

NOTE: To delegate HelpDesk applets to staff who do not have DSRAZOR installed, you must save the applets as **.EXE** files. Just give the EXE and supporting DLL(s) to your helpdesk staff.

Begin View in HelpDesk User's Context

[HDUSRCTX1.DSR]

This example applet shows how to start the HelpDesk operator's view in his/her own context. This way the HelpDesk staff will not see other parts of your Tree when they run the applet. You can customize this applet in the Designer, or have our tech support customize it for you. The applet can have different buttons (disable accounts, change title, etc). You can limit the list of users by numerous attributes such as whether or not their account is locked, what department they are in, or if the login name does not contain "admin".

Change Directory Space Restrictions via NLM

[DIRSPCNLM1.DSR]

This applet will display Directory Space Restrictions and space in use, and allow changing of Directory Space Restrictions. If a server doesn't show up in the applet, map a drive to the server then run the applet again.

IMPORTANT: **CVMONE.NLM** must be loaded on each NetWare server where directory space restrictions will be changed with this applet.

Change User Volume Space Restrictions via NLM

[VOLRESN8.DSR]

Select from a list of attached servers and their volumes to find users with volume space restrictions and change their restrictions using **CVMONE.NLM**.

IMPORTANT: **CVMONE.NLM** must be loaded on each NetWare server where space restrictions will be changed with this applet.

Clear Connections via NLM

[CLRVNLM1.DSR]

Lets the user of this applet clear NetWare connections using **CVMONE.NLM**.

IMPORTANT: **CVMONE.NLM** must be loaded on each NetWare server where connections are to be cleared with this applet.

Create Users via NLM

[CUVNLM.DSR]

Lets users with Browse and Read privileges create eDirectory/NDS user objects using **CVMONE.NLM**.

DSRAZOR for eDirectory/NDS and NetWare Ready-to-Run Applets

IMPORTANT: Before you can use this applet, you must edit it in the **Designer** to specify a server in the eDirectory/NDS Tree on which **CVMONE.NLM** is loaded.

Create Users via NLM with Template

[CUWTNLM1.DSR]

This HelpDesk applet can be used to create users with a template via **CVMONE.NLM**.

IMPORTANT: Before you can use this applet, you must edit it in the **Designer** to specify a server in the eDirectory/NDS Tree on which **CVMONE.NLM** is loaded as well as the name of the template to use.

Create Users with NLM/Template/Attributes

[CUTANLM2.DSR]

This HelpDesk applet can be used to create a user with a template via **CVMONE.NLM**. You may select the template at runtime, or you may predefine the template name in the **Designer**.

IMPORTANT: You must edit this applet in the **Designer** to specify a server in the eDirectory/NDS Tree on which **CVMONE.NLM** is loaded.

This applet is set to require that the HelpDesk user types in the login name, last name, first name, full name, and title prior to creating the user. The applet can be modified in the **Designer** to include any attributes you want to require for user creation.

Edit User Information (Tab)

[EDITUSERT.DSR]

This applet allows someone such as Helpdesk or HR staff to edit user details. The applet could be modified to use the optional Zero Privilege Helpdesk CVMONE.NLM, to edit different attributes, to be limited to specific containers, or to have your attribute values pre-defined so helpdesk can select the appropriate value from a list (instead of typing it in). This applet uses a Tab Control.

GroupWise Dist. List Membership

[GWDLMEM.DSR]

This sample applet allows you to manage the membership of your GroupWise distribution lists.

IMPORTANT: This applet requires that GroupWise version 5.5 DLLs be present in your DSRAZOR directory. If you do not want to use the GroupWise 5.5 DLLs, please see the DSRAZOR for GroupWise applet called "3. Manage Distribution List Membership" which uses the GroupWise client on your workstation (instead of the GroupWise version 5.5 DLLs).

GroupWise Password Management

[GWPWDM4.DSR]

Allows HelpDesk to administer GroupWise and eDirectory/NDS passwords.

DSRAZOR for eDirectory/NDS and NetWare Ready-to-Run Applets

GroupWise User's Dist. List Mgmt

[GWDLMGR1.DSR]

Allows HelpDesk to manage individual user GroupWise distribution lists.

IMPORTANT: This applet requires that GroupWise version 5.5 DLLs be present in your DSRAZOR directory.

Import Users w/Runtime Template via NLM

[UIMP.nlm1.DSR]

Imports users' attributes from a comma-delimited file using a selected eDirectory/NDS template via CVMONE.NLM.

IMPORTANT: You must edit this applet in the **Designer** to specify which server the **NLM** is loaded on.

The file name must use a *.CSV extension. For an example, see **EXAMPLE.CSV** in the DSRAZOR installation directory. By default, the CSV file must use the following format:

```
"User1", "Last Name", "Dept A", "444-3333",  
"User2", "Smith", "Dept B", "888-3333",  
"User3", "Jones", "Dept C", "Ext. 78",
```

You can edit this applet in the **Designer** to change the CSV format or add different attributes that you may want to import, such as full name, title, etc.

List Users by Group Membership

[GRPLSTA.DSR]

This applet is an example of how to list members of a specific group or groups. This applet must be edited in the **Designer** to put in the name(s) of the group(s).

Multi-function Helpdesk (Menu)

[HELPDM2.DSR]

This helpdesk applet creates eDirectory/NDS accounts, changes group membership, and edits accounts. The applet has a menu on the first window. The applet can be modified to use the Zero Privilege Helpdesk CVMONE.NLM, to be limited to specific containers, or to add/remove functions and attributes. After it has been customized to your needs, save the applet as an EXE to give to your helpdesk staff.

Multi-function Helpdesk (Tab)

[HELPDT2.DSR]

This helpdesk applet creates NDS accounts, changes group membership, and edits accounts. The applet uses a Tab Control. The applet can be modified to use the Zero Privilege Helpdesk CVMONE.NLM, to be limited to specific containers, or to add/remove functions and attributes. After it has been customized to your needs, save the applet as an EXE to give to your helpdesk staff.

DSRAZOR for eDirectory/NDS and NetWare Ready-to-Run Applets

My Print Queue Management

[MYQUEUE.DSR]

This simple applet will allow you to manipulate your own print jobs.

My Profile - Current Activity

[MYPROFL2.DSR]

Displays who the user of this applet is to eDirectory/NDS, what servers the user is attached to, and the user's current drive mappings, and the previous logins used by CURRENT USER on this machine.

NDPS + or - to Users Workstation via NLM

[HDNDPS2.DSR]

This applet demonstrates the addition and removal of NDPS printers to a user's workstation. It can also be used to set the default NDPS printer.

IMPORTANT: For this applet to operate properly, **CVMONE.NLM** must be loaded. You must edit this applet in the **Designer** to specify which server the **NLM** is loaded on.

NDPS Print Job Manager

[NDPS2A.DSR]

This example applet demonstrates how to manage NDPS print jobs.

Pass NDS Attribute as Parameter to EXE

[PASS2.DSR]

Lists all accounts in a selected container branch that have a network address. This applet serves as an example of how to pass almost any eDirectory/NDS attribute as a parameter to an **EXE** file; this applet passes the network address.

IMPORTANT: To specify the executable file, you must edit this applet in the **Designer**.

Print Queue Manager

[QMAN4.DSR]

Manages print jobs (hold, resume, delete) and sends a test page to a queue. You can customize this applet in the **Designer** to show only those containers where print queues are kept.

Search for Users to Manage

[HDSRCH2.DSR]

Searches for any user object (within an eDirectory/NDS Tree or a selected container and subcontainers) by name match, whether partial or exact. Allows you to manage selected users (e.g. change their passwords, view their login time restrictions, etc.)

DSRAZOR for eDirectory/NDS and NetWare Ready-to-Run Applets

User Group Details

[HELDP2.DSR]

Lists groups (within an eDirectory/NDS Tree or a selected container and subcontainers) and displays details.

User Mgmt + Disk Space Restrictions

[HELDP1B.DSR]

Finds users in a selected container and permits your HelpDesk users to manage them. Edit this applet in the **Designer** to limit the list of users by numerous attributes, including the length of login name, whether or not the account is locked, if the login name does not contain "admin", etc. You can also edit this applet in the **Designer** to include different function buttons, such as enabling and disabling eDirectory/NDS accounts, changing telephone numbers, etc.

View NCP File Opens/Close Activity

[PACKETS1.DSR]

Allows you to select an attached NetWare server, select a connection to watch, click **Start NCP Monitoring**, and watch the File Open/Close activity.

ZEN Remote Control/Remote View (Tab)

[ZENRCRVT1.DSR]

This applet allows remote controlling or remote viewing ZEN workstations. This applet uses a Tab Control. The applet can be modified to be limited to specific containers/workstations, to change from the Z:\ drive to another drive, or to use the Zero Privilege Helpdesk **CVMONE.NLM**. The applet can be delegated to Helpdesk or other staff as an EXE.

ZEN Remote Control / Remote View by User

[ZENRCRVU3.DSR]

This applet allows remote controlling or remote viewing ZEN workstations. The applet can be modified to be limited to specific containers/workstations, to change from the Z:\ drive to another drive, or to use the Zero Privilege Helpdesk **CVMONE.NLM**. The applet can be delegated to Helpdesk or other staff as an EXE.

ZEN Remote Control / Remote View by Workstation

[ZENRCRV1.DSR]

This applet allows remote controlling or remote viewing ZEN workstations. The applet can be modified to be limited to specific containers/workstations, to change from the Z:\ drive to another drive, or to use the Zero Privilege Helpdesk **CVMONE.NLM**. The applet can be delegated to Helpdesk or other staff as an EXE.

Zero Priv – Import w/ Random Passwords

[ZPHDIRP1.DSR]

This Zero Privilege applet allows you to import users with randomly generated passwords that your HelpDesk operator cannot find out. Passwords are generated and created via **CVMONE.NLM** and are stored in the **SYS:SYSTEM** directory.

DSRAZOR for eDirectory/NDS and NetWare Ready-to-Run Applets

IMPORTANT: Before you can use this applet, you must edit it in the **Designer** to specify a server in the eDirectory/NDS Tree on which **CVMONE.NLM** is loaded.

Zero Priv – Use Preset Values

[ZPHDPS.DSR]

Includes two methods of using rules to prevent the HelpDesk user from violating business standards. For example, in this solution, the user can only assign grace logins of exactly five, and the user can only reset the maximum concurrent logins to two.

IMPORTANT: Before you can use this applet, you must edit it in the **Designer** to specify a server in the eDirectory/NDS Tree on which **CVMONE.NLM** is loaded.

Zero Privilege HelpDesk (Uses NLM)

[HELPSK4.DSR]

You can customize this example Zero Privilege HelpDesk applet or build your own with the **Designer**. You can limit the list of users by numerous attributes include the length of their login name, whether or not their account is locked, if the login name does not contain "admin", etc. This example also allows account changes via the **CVMONE.NLM**.

IMPORTANT: Before you can use this applet, you must edit it in the **Designer** to specify a server in the eDirectory/NDS Tree on which **CVMONE.NLM** is loaded.

DSRAZOR for eDirectory/NDS and NetWare Ready-to-Run Applets

Category: NDS User Maintenance

The applets available in this section are useful for maintaining your eDirectory/NDS users.

Assign Users Ability to Self Manage

[SACL2.DSR]

This applet allows you to select Users and assign them R/W privileges to self-manage their own attributes. The applet can be modified to work with different attributes than those initially shows (which are Title, Department, Location, Phone, Fax, and Email Address). This applet is often run by the administrator prior to distributing the **User Self-Update of NDS Values** [MYEDIT2.DSR] applet to end users.

Change Home Directory Path/Not Volume

[HOMEP3.DSR]

This applet allows you to change the home directory **path** for a user or multiple users, without changing the volume. The user(s) must already have a home directory defined.

If the new directory does not exist, it will be created, and the user's current rights to the old directory will be applied to the new directory.

Change Home Directory Volume/Not Path

[HOMEV3.DSR]

This applet allows you to change the home directory **volume** for a user or multiple users, without changing the path. The user(s) must already have a home directory defined.

If the new directory does not exist, it will be created, and the user's current rights to the old directory will be applied to the new directory.

Change Selected Attributes for Users - Mass

[MASSCHG6.DSR]

This applet changes attributes for individual users, all users (using **Change Attributes for All Users** button), or selected users (using the **Change Attributes for "Selected" Users** button). By default you can use this applet to change the password, intruder lockout, login time restrictions, minimum password length, password expiration, OU (department), message server (default server), home directory, and employee ID. This applet can be edited in the **Designer** to customize which attributes are displayed and modified.

Change Selected Attributes for Users – Mass (Tab)

[MASSCHT.DSR]

This applet changes attributes for individual users, all users (by using **Change Attributes for All Users** button), or selected users (by using the **Change Attributes for "Selected" Users** button). This applet can be edited in the **Designer** to customize which attributes are displayed and modified. This applet uses a Tab Control.

DSRAZOR for eDirectory/NDS and NetWare Ready-to-Run Applets

Change Selected Multi-Valued Attributes

[MULTVAL2.DSR]

This applet allows you to add or remove values to multi-valued attributes, such as phone numbers and descriptions. The applet can be edited in the **Designer** to make it work for any multi-valued attribute, including custom schema items.

Copy Members from one Group to another Group

[COPYGRPMEM.DSR]

This applet allows you to copy member(s) from one group to another within the same eDirectory/NDS Tree.

Create GroupWise Account for Existing User

[ICG5USR.DSR]

Creates a GroupWise account for an existing eDirectory/NDS user.

Create User Account plus GW with Template

[ICGWUSER.DSR]

Creates eDirectory/NDS user (with or without a template) and GroupWise accounts. You can edit this applet in the **Designer** to specify a template, require that additional user attributes be filled in, or have the applet use the Zero Privilege HelpDesk **CVMONE.NLM**.

Create User Account with Template

[CUTEMPLT.DSR]

This applet serves as an example of what services you would use to create eDirectory/NDS users with templates. You can edit this applet in the **Designer** to specify a template, require that additional user attributes be filled in, or have the applet use the Zero Privilege HelpDesk **CVMONE.NLM**.

Create User w/ Runtime Chosen Template

[CUT3A.DSR]

Creates eDirectory/NDS users with a template. Similar to the applet named **Create User Account with Template**, except that this applet lets you select the template when you are running the applet, so that you do not have to specify the template name in the **Designer**.

Create Users with NLM/Template/Attributes

[CUTANLM2.DSR]

This HelpDesk applet can be used to create a user with a template via **CVMONE.NLM**. You may select the template at runtime, or you may pre-define the template name in the **Designer**.

IMPORTANT: You must edit this applet in the **Designer** to indicate the server in the eDirectory/NDS Tree on which **CVMONE.NLM** is loaded.

DSRAZOR for eDirectory/NDS and NetWare Ready-to-Run Applets

This applet is currently set to require that the HelpDesk user types in the login name, last name, first name, full name, and title prior to creating the user. You can change this applet in the **Designer** to include any attributes you want to require for user creation.

Create Users with Required Attributes

[CURA3A.DSR]

This applet creates users with required attributes. The Location field shows how you can optionally include a list of pre-defined values for any attribute.

NOTE: This applet forces filling in required attributes into the form. It can be edited in the **Designer** to include almost any eDirectory/NDS attribute, to have the applet use a template, or use the Zero Privilege Helpdesk **CVMONE.NLM**.

Group Membership (Add, Create, Delete)

[GRP_AD2.DSR]

Creates a new group in a specified container and/or allows you to add and delete members from eDirectory/NDS groups.

Import Group Members from CSV File

[GRPMIMP2.DSR]

Imports members to a group from a comma-delimited file. The file name must use a *.CSV extension. For an example, see **GRPIMP.CSV** in the DSRAZOR installation directory. To use this applet without any editing, the CSV file must use the following format:

```
group.hr.acme,newmember1.container.location,  
group.hr.acme,newmember2.container.location,  
group.hr.acme,newmember3.container.location,
```

where *user* (*newmember*) is a fully qualified eDirectory/NDS user. The group name can be fully qualified (choose Root when running the applet) or can just be relative name (choose the container for the groups when running the applet).

If your CSV file is a different format (using quotation marks or Excel style), you can edit this applet in the **Designer** to accept a different CSV format.

Import GW Distribution List Members from CSV

[UIGWDL.DSR]

Imports or deletes members from GroupWise distribution lists from CSV file. The file name must use a *.CSV extension. For an example, see **UIGWDL.CSV** in the DSRAZOR installation directory. To use this applet without any editing, the CSV file must use the following Excel style format:

```
CCuser1.ou.org  
TOuser2.ou.org  
BCuser3.ou.org
```

If your CSV file is a different format (using quotation marks or a non-Excel style), you can edit this applet in the **Designer** to accept a different CSV format.

DSRAZOR for eDirectory/NDS and NetWare Ready-to-Run Applets

IMPORTANT: This applet requires tokens from **both** DSRAZOR for GroupWise and DSRAZOR for eDirectory/NDS and NetWare.

Import NDS Password to New or Existing Accounts

[UIMPP.DSR]

Imports passwords from a comma-delimited file. If the user already exists it will just add the password. If the user doesn't exist, the new user will be created. The file name must use a *.CSV extension. For an example, see PWD_EX.CSV in the DSRAZOR installation directory. To use this applet without any editing, the CSV file must use the following format:

```
"user1" , "pwd1" ,  
"user2" , "pwd3" ,
```

where *user* is a fully qualified eDirectory/NDS user name and *pwd* is the user's password.

If your CSV file does not have quotation marks, you can edit the applet in the **Designer** to accept a different CSV format.

To import using a template, edit the **Mass User Create with Template** button in the **Designer** to specify the appropriate template.

Import NIMS List Users from CSV File

[UI_NIMS.DSR]

Imports NetWare Instant Messaging Service (NIMS) users from a comma-delimited file. Also, creates or deletes list. The imported file name must use a *.CSV extension. For an example, see NIMS.CSV in the DSRAZOR installation directory. To use this applet without any editing, the CSV file must use the following format:

```
LoginName, FullName, ListUserOptions, AdminOptions
```

If your CSV file is a different format (using quotation marks or Excel style), you can edit this applet in the **Designer** to accept a different CSV format.

Import Org Role Occupants from CSV

[IMPORG.DSR]

Imports *Organizational Roles* and the *Occupants* of those roles into your eDirectory/NDS and sets the security equivalence. The imported file name must use a *.CSV extension. For an example, see IMPORG.CSV in the DSRAZOR installation directory. To use this applet without any editing, the CSV file must use the following Excel-style format:

```
TESTOrgRole , user1.ou.org , user2.ou4.org6 , user3.ou.org  
OrgRole1 , user1.ou.org , user2.ou.org , user3.ou.org  
OrgRole37 , user6.ou2.org3 , user1.ou.org , user2.ou.orgB
```

If your CSV file is a different format (using quotation marks or edited in an application other than Excel), you can edit this applet in the **Designer** to accept a different CSV format.

DSRAZOR for eDirectory/NDS and NetWare Ready-to-Run Applets

Import Users + Attributes from CSV File

[UIMP1.DSR]

Imports users and their attributes from a comma-delimited file. The imported file name must use a *.CSV extension. For an example, see **EXAMPLE.CSV** in the DSRAZOR installation directory. To use this applet without any editing, the CSV file must use the following format:

```
"User1", "Last Name", "Dept A", "444-3333",  
"User2", "Smith", "Dept B", "888-3333",  
"User3", "Jones", "Dept C", "Ext. 78",
```

If your CSV file does not have quotation marks, you can edit the applet in the **Designer** to accept a different CSV format.

To import using an eDirectory/NDS template, edit the **Mass User Create with Template** button in the **Designer** to specify the appropriate template.

Import Users + GroupWise Acct from CSV File

[GWIU.DSR]

This sample applet imports eDirectory/NDS users plus creates GroupWise accounts. The imported file name must use a *.CSV extension. For an example, see **GWIU.CSV** in the DSRAZOR installation directory. To use this applet without any editing, the CSV file must use the following Excel style format:

```
user1,lastname1,dept 1,444-4444,.rhpo.any_org,Post Office  
user2,lastname2,dept 2,554-4444,.rhpo.any_org,System  
user3,lastname3,dept 3,334-4444,.rhpo.any_org,Domain  
user4,lastname4,dept 4,114-4444,.rhpo.any_org,System  
user5,lastname5,dept 5,774-4444,.rhpo.any_org,Post Office
```

If your CSV file is not edited in Excel, you can modify the applet in the **Designer** to accept a different CSV format.

When importing GroupWise users, you must specify the fully distinguished name of the GroupWise Post Office to import the GroupWise users into. You may optionally specify the GroupWise visibility to set the new user accounts to. If no GroupWise visibility is specified, the default is *System*.

IMPORTANT: This applet requires the GroupWise client.

Import Users + GW Dist List Membership from CSV

[UIGW.DSR]

Imports users from CSV file and sets attributes, including distribution list membership. This applet is set to import from an Excel-style CSV file, but you can edit the applet in the **Designer** to accept a different CSV format. For an example, see **UIGW.CSV** in the DSRAZOR installation directory. The file must use the following format:

```
user1,LastName1,DeptA,444-4444,GWPostOfficeName.ou.org,System,CCdistributionlistname1.ou.org  
user2,LastName2,DeptB,444-4455,GWPostOfficeName.ou.org,Domain,TODistributionlistname1.ou.org  
user3,LastName3,DeptC,444-4466,GWPostOfficeName.ou.org,Post Office,BCdistributionlistname2.ou.org
```

DSRAZOR for eDirectory/NDS and NetWare Ready-to-Run Applets

IMPORTANT: This applet requires tokens from **both** DSRAZOR for GroupWise and DSRAZOR for eDirectory/NDS.

Import Users w/Home Dir (HD=Attribute)

[UIMPOA.DSR]

This applet imports eDirectory/NDS users from a comma-delimited file and defines their home directory at the same time. The home directory is automatically given the value of the named Attribute. For an example, see **UIMPOA.CSV** in the DSRAZOR installation directory. By default the file would use the following Excel-style format:

```
six,my ou,Yourserver_sys.anyorg:users\sales+ou  
ten,your ou,Yourserver_sys.anyorg:homedirs\engg+title
```

To change to a different **CSV** format, edit the applet in the **Designer**.

Import Users w/Home Dir (HD=LoginID)

[UIMPHD.DSR]

Demonstrates how to import users and assign a home directory name based on Login ID. This applet also demonstrates how to assign a random password. The file name must use a ***.CSV** extension. For an example, see **UIMPHD.CSV** in the DSRAZOR installation directory. To use this applet without any editing, the **CSV** file must have the following Excel-style format:

```
uone,password,Yourserver_sys.anyorg:users\sales  
utwo,pwd,Yourserver_sys.anyorg:homedirs\eng  
uthree,password,yourserver_sys.anyorg:homedirs\develop
```

If your **CSV** file is a different format (using quotation marks or edited in an application other than Excel), you can modify this applet in the **Designer** to accept a different **CSV** format.

Import Users w/ Runtime Selected Template

[UIMPT1.DSR]

Imports users' attributes from a comma-delimited file using an eDirectory/NDS template. The file name must use a ***.CSV** extension. For an example, see **EXAMPLE.CSV** in the DSRAZOR installation directory. To use this applet without any editing, the **CSV** file would use the following format:

```
"User1","Last Name","Dept A","444-3333",  
"User2","Smith","Dept B","888-3333",  
"User3","Jones","Dept C","Ext. 78",
```

You can edit this applet in the **Designer** to change the **CSV** format (if your data file doesn't have quotes), or add different attributes that you may want to import (such as full name or title).

Import Users w/Runtime Template via NLM

[UIMP.nlm1.DSR]

Imports users' attributes from a comma-delimited file using a selected eDirectory/NDS template via **CVMONE.nlm**.

DSRAZOR for eDirectory/NDS and NetWare Ready-to-Run Applets

IMPORTANT: You must edit this applet in the **Designer** to specify which server **CVMONE.NLM** is loaded on.

The file name must use a ***.CSV** extension. For an example, see **EXAMPLE.CSV** in the DSRAZOR installation directory. By default, the CSV file would use the following format:

```
"User1", "Last Name", "Dept A", "444-3333" ,  
"User2", "Smith", "Dept B", "888-3333" ,  
"User3", "Jones", "Dept C", "Ext. 78" ,
```

You can edit this applet in the **Designer** to change the CSV format (if your data file doesn't have quotes), or add different attributes that you may want to import (such as full name or title).

Login Scripts Compare/Replace

[LSCORR1.DSR]

Lets you select a login script as a master and then choose to *either*:

- Compare the master to **all** the login scripts in a selected container

OR

- Replace **all** the login scripts within a container with the master login script

IMPORTANT: This solution will compare/replace login scripts for **all** types of objects (user, container, etc.). To limit the login scripts to a particular type of object, edit the appropriate rule in the **Designer**.

This applet handles login scripts that are less than 4096 bytes.

Maintain User's Home Directory

[USERHD1.DSR]

Displays the details of files in the Home Directory of a selected eDirectory/NDS user. The applet gives you the option of deleting files. It does not display subdirectories.

Mass NDS Password Change

[MASSP1.DSR]

Allows changing the eDirectory/NDS passwords of any or all the users.

Move User(s) to a Different Container

[EDIRMOVE1.DSR]

This applet allows you to move a user or multiple users. It moves their eDirectory account(s) to a different container. The applet can be modified if you would like to move other types of objects - groups, containers, templates, workstations, etc.

Search and Replace on Login Scripts

[SR1.DSR]

Searches for login scripts containing the text that you specify and replaces it with new text that you specify.

DSRAZOR for eDirectory/NDS and NetWare Ready-to-Run Applets

Search and Replace on Text-based Attributes

[SR2.DSR]

Queries a container branch for users with a Location attribute value that contains an entered string and allows you to replace it with a new string. To query for other attribute types, edit the button control in the **Designer**.

Set GroupWise Visibility

[NGWVIS.DSR]

This applet allows you to change the GroupWise Address Book Visibility for users in a selected container.

IMPORTANT: This applet requires the GroupWise client.

Set UniqueID to be equal to CN

[UNIQUEID.DSR]

This applet sets the UniqueID to be equal to the CN for all users displayed.

Set User as Owner of their Home Directory

[HOMEDIROWNER2.DSR]

This applet displays Home Directories and their owners. It also allows you to set the ownership to be the user that the Home Directory belongs to (in case any were set to other owners, such as the creator of the account). It also sets the ownership of the files and sub-directories within the Home Directory.

Smart Delete NDS Acct, Home Dir + GroupWise Acct

[SMRTDEL2.DSR]

Displays all users (except for those with "admin" in their names) in the selected container and deletes any or all of them – it deletes their eDirectory/NDS account, their home directory structure (all files and all subdirectories), and their GroupWise account (if there is one). You can delete a GroupWise account via the GroupWise client on the workstation or via the GroupWise 5.5 admin DLLs copied into your DSRAZOR directory.

Updating User's Full Name

[UPFULLNM.DSR]

Updates a user's Full Name attribute value. Select your container and then select the user to update. Edit the applet in the **Designer** to change other attribute values (e.g. Last Name, Department, Title).

Updating User's Phone Number

[UPPHONE.DSR]

Updates a user's Phone Number attribute value. Select your container and then select the user to update. Edit the applet in the **Designer** to change other attribute values (e.g. Last Name, Department, Title).

DSRAZOR for eDirectory/NDS and NetWare Ready-to-Run Applets

IMPORTANT: If multiple phone numbers are defined, use the **Update Multiple Phone Numbers** option.

User Self-Update of GroupWise Dist. Lists

[MYGWDL.DSR]

Allows a user to add or remove themselves from GroupWise distribution lists.

IMPORTANT: This applet requires that GroupWise version 5.5 DLLs be copied into your DSRAZOR directory.

User Self-Update of NDS Password

[USR_PWD.DSR]

Allows a user to change their own eDirectory/NDS password. You can save this applet as an **EXE** to distribute to users so that they do not need to have the full DSRAZOR product.

User Self-Update of NDS Values

[MYEDIT2.DSR]

This applet allows an individual user with **Write** privileges to maintain only that user's own eDirectory/NDS details (title, department, location, phone, fax, and email). Which attributes are in the applet can be changed, if desired. Then you can save the applet as an **EXE** to distribute to end users so that they do not need to have DSRAZOR. First you may want to use the **Assign Users Ability to Self Manage** [SACL2.DSR] applet to give the users the necessary privileges for changing their own attributes.

View Home Directory Sizes

[HOMED3.DSR]

This applet displays Home Directory sizes.

DSRAZOR for eDirectory/NDS and NetWare Ready-to-Run Applets

Category: Examine Servers/Disks

The applets in this section are useful for maintaining and examining your servers, volumes, files, directories, disk space, and connections.

Compressed vs. Uncompressed Directory Sizes

[DIRSIZE5.DSR]

This applet will find directory sizes and Directory Space Restrictions and allow you to change the restrictions. It will show you the actual amount of disk space in use (compressed) and the space needed if all files were uncompressed. Use the lower search button if you want to see the uncompressed sizes.

This applet is set to search 1 or 2 directory levels deep. The directory depth can be changed in the Designer.

If a server does not show up, map a drive to the server then re-run the applet. This applet is currently for NetWare only.

Connection Stats (Linux only)

[SRVCON4LX.DSR]

This applet lists the connections and statistics (such as connection type, connection number, and elapsed time) on a SUSE Linux Enterprise Server. There is a separate applet for NetWare servers.

Connection Stats (NetWare only)

[SRVCON4NW.DSR]

This applet lists the connections and statistics (such as connection type, connection number, elapsed time, open files, and request packets) on a NetWare server. There is a separate applet for Linux servers.

Count Servers

[SCOUNT10.DSR]

This applet counts the number of servers in a specific eDir/NDS Tree or in a selected Container and its Subcontainers. The second and third buttons are used to determine how many DSRAZOR licenses are needed. Your sales rep may ask you to send in screenshots of the results generated by the second or third buttons, depending on whether you are licensing for your whole Tree or only for certain Container(s).

Directory Space Restrictions (Linux only)

[DIRSPC7LX.DSR]

This applet will display Directory Space Restrictions and space in use. This applet is for SUSE Linux Enterprise Servers only (there is a separate applet for NetWare).

DSRAZOR for eDirectory/NDS and NetWare Ready-to-Run Applets

Directory Space Restrictions (NetWare only)

[DIRSPC7LX.DSR]

This applet will display Directory Space Restrictions and space in use. Additionally you can change Directory Space Restrictions. It is currently set to show 1 directory level beneath the selected directory, but if desired the directory depth can be changed in the Designer. This applet is for NetWare only (there is a separate applet for Linux).

Disk Space in Use, Files Owned/Unowned

[VOLSPC8.DSR]

This applet shows who is using space on a volume, their space restriction, and space available. You can also see which files are owned by a selected user or find files with no owner. If a server does not show up, map a drive to the server then re-run the applet.

Disk Space Restrictions + Manage

[VOLREST3.DSR]

This initial page of this applet shows only the users who have Disk Space Restrictions on the selected volume, what the restriction is, and how much space they have available. The second page that shows the users who are using space on the volume, even if they do not have a Disk Space Restriction set. The applet also allows you to modify the Disk Space Restriction for a selected user. If a server does not show up, map a drive to the server then re-run the applet.

Document DHCP Leases

[DHCP1.DSR]

This applet allows you to search for and display DHCP addresses for your network. You may start at the Root of the Tree or a lower container. You may display all of the information, or only information for IP addresses with host names assigned.

Document Server Security SET Parameters

[SSET3.DSR]

This applet lists your NetWare servers and some of the Server SET Parameter values. You can edit this applet to include additional Server SET Parameters.

Enterprise File Server Status (All servers)

[BUS8ALL.DSR]

This applet shows information ALL eDirectory servers. (There are other applets that show only NetWare servers or only SUSE Linux Enterprise servers.)

The ListView near the top uses a column format which is good for items that have one value or a few values, such as Version and CPU Utilization. The TreeView near the bottom of the On Screen results uses a nested format which is good for items that may have many values, such as LAN Board Counters.

Note that CPU Speed, LAN Board Speed, DNS Hostname, Manufacturer, Model, and Serial Number will only display correctly for NetWare 5.x and NetWare 6.x servers that have CVMONE.NLM version 1.75b (or higher) loaded on the server.

DSRAZOR for eDirectory/NDS and NetWare Ready-to-Run Applets

Enterprise File Server Status (Linux only)

[BUS7LX.DSR]

This applet shows information about only SUSE Linux Enterprise Servers. (There are other applets that show all eDirectory servers or only NetWare servers.)

The ListView near the top uses a column format which is good for items that have one value or a few values, such as Version and CPU Utilization. The TreeView near the bottom of the On Screen results uses a nested format which is good for items that may have many values, such as LAN Board Counters.

Enterprise File Server Status (NetWare only)

[BUS7NW.DSR]

This applet shows information about only NetWare servers. (There are other applets that show all eDirectory servers or only SUSE Linux Enterprise servers.)

The ListView near the top uses a column format which is good for items that have one value or a few values, such as Version and CPU Utilization. The TreeView near the bottom of the On Screen results uses a nested format which is good for items that may have many values, such as LAN Board Counters.

Note that the CPU Speed, LAN Board Speed, DNS Hostname, Manufacturer, Model, and Serial Number items will only display correctly for NetWare 5.x and NetWare 6.x servers that have CVMONE.NLM version 1.75b (or higher) loaded on the server.server.

Enterprise Volume Space Report

[VOLVIEW3.DSR]

This applet will search your Tree for ALL volume objects and report their space in use, space available, and percent full. If you do not want to see all of the volumes, you can save the volume list and edit it to remove certain volumes, or rules can be set in the Designer to exclude specific volumes.

File Extensions in Use - Count Each

[FILE-EX2.DSR]

This applet lists the file extensions on a selected volume, the number of each, and how much total space is being used by each extension type.

Find All Print Servers, Printers & Queues

[PSPQ1.DSR]

This applet finds print servers (with object class "print server") and displays their printers and queues.

Find All User Connections Using IPX

[ANYIPX2.DSR]

This applet lists the users who are currently logged in with an IPX network address. The applet can be modified in the **Designer** to find users logged in with an IP addresses instead, if desired.

DSRAZOR for eDirectory/NDS and NetWare Ready-to-Run Applets

Find Directories with an Inheritance Filter

[IF6.DSR]

This applet finds directories with an Inheritance Filter/Inherited Rights Filter. It is currently set to search 3 directory levels deep, but if needed the directory depth can be changed in the **Designer**. This same applet can be used for both NetWare and SUSE Linux Enterprise Servers.

Find Files Ending with MP3 (or other extension)

[MP3SRCH3.DSR]

This applet will search for files ending in MP3. The applet can be modified to search for different file extensions or to search multiple volumes/servers. If a server does not show up, map a drive to the server then re-run the applet. The results can be displayed on screen, which is useful if you will be deleting some of the MP3s. Or the results can be sent directly to a CSV file, which is faster if you only need a report.

Find Files Greater than 1MB in Size (or other size)

[LRGSRCH3.DSR]

This applet will search for files greater than 1 MB in size. The applet can be modified to search for different sizes or to search multiple volumes/servers. If a server does not show up, map a drive to the server then re-run the applet. The results can be displayed on screen, which is useful if you will be deleting some of the large files. Or the results can be sent directly to a CSV file, which is faster if you only need a report.

Find Files Unused for Past 365 Days (or other interval)

[FILES365C.DSR]

This applet will search for files that were last accessed more than 365 days ago. The applet can be modified to search for a different number of days, or to look at last modified date instead of last accessed, or to search multiple volumes/servers. If a server does not show up, map a drive to the server then re-run the applet. The results can be displayed on screen, which is useful if you will be deleting some of the unused files. Or the results can be sent directly to a CSV file, which is faster if you only need a report.

Find Servers that have a Specific NLM Loaded

[NLMLOAD1.DSR]

This applet is an example of checking to see if a certain NLM is loaded on your NetWare servers. This example is looking for CVMONE.NLM, but the applet can be modified in the **Designer** to check whether a different NLM is loaded instead.

Find Servers where a Specific File was Last Modified more than X Days Ago

[LASTMOD1.DSR]

This applet checks if a specific file was modified more than a certain number of days ago on each server. This example finds if the SYS:ETC\HOSTS file was modified more than 30 days ago. The applet can be edited in the **Designer** to look at a different file and/or last modified date a different number of days ago.

DSRAZOR for eDirectory/NDS and NetWare Ready-to-Run Applets

Hung Login Scripts (SYS:_NETWARE files open)

[SYSNW1.DSR]

While a user is logging in to a NetWare server, a file is opened in **SYS:_NETWARE**. This applet lists all files open in this location. Use this applet to find hung login scripts.

IMPORTANT: This applet requires that **CVMONE.NLM** be loaded.

Logging File Usage

[LOGFILE2.DSR]

This applet demonstrates choosing a file and then viewing that file's active users. You can then click on the Log button and log the active users. You can set the Log to record users at a specified interval. As long as this screen is active the logging will occur, instantly tracking activity. If you don't see the NetWare server you want listed, map a drive to that server then re-run the applet.

NLM Interdependencies

[NLMS3.DSR]

This applet lists the NLMs loaded on a selected server, the NLMs that must be loaded prior to the selected NLM, and the NLMs that are dependent upon the selected NLM.

IMPORTANT: This applet requires that **CVMONE.NLM** be loaded on the servers that you want to query.

Purgeable Space Report

[PURGER2.DSR]

Lists purgeable space on each volume of a selected server. Also lists space that cannot be purged. If a server does not show up, map a drive to the server then re-run the applet.

Search for a Specific String in a Certain File on All Servers

[STRING1.DSR]

This applet is an example of searching a file on all servers to look for a particular string. In this example we are searching all of the AUTOEXEC.NCF files to see if the string "LOAD RCONAG6" is found or not. The applet can be modified in the **Designer** to look for any desired string in any specified file.

Send Commands to Servers without RCONSOLE

[NCF2.DSR]

Allows you to enter a command line to send to a list of NetWare servers. RCONSOLE is not needed.

IMPORTANT: To use this application successfully, the user must have **Console Operator** privileges (or better).

Simple Software Metering Example

[METER3.DSR]

DSRAZOR for eDirectory/NDS and NetWare Ready-to-Run Applets

This applet logs file usage. This applet must be edited in the **Designer** to specify which file(s) you want to watch. Currently it is for files on NetWare servers (not Linux).

Simple Volume % Full Monitor

[VOLMON1.DSR]

This applet displays the space in use and percentage full for all the volumes of up to four attached servers. If a server does not show up, map a drive to the server then re-run the applet. The percent full numbers update every 60 seconds. The update interval can be changed in the **Designer**.

Specific, Interactive File Usage

[FILENOW1.DSR]

Monitors activity on files that are specified "on the fly" without having to edit the applet. Also displays the active users of a selected file. Currently this applet is only for NetWare (not Linux).

View File Details Per Directory

[FILEUSE3.DSR]

This applet will list the details of the files in the directory you select. This applet will list the details of the files in the directory you select. Currently it only shows the files in the selected directory itself. The applet can be modified if you want it to also include the files in the sub-directories. If you don't see a server, map a drive to it and then re-run the applet. The results can be displayed on screen, which is useful if you will be deleting some of the files. Or the results can be sent directly to a CSV file, which is faster if you only need a report.

Who Has Open Files by Connection

[WHO1.DSR]

Displays connections to attached NetWare servers and the files they are using or have open. Of the listed files, select a file to show other eDirectory users that have it open. The applet allows you to select a file that a user has open and display who else has it open. It also lets you send a message to a file's users and displays a report of how the Send Message functioned.

Who Has Selected File Open

[DIROPEN3.DSR]

This applet displays files on attached NetWare servers. If you don't see a server, map a drive to it then re-run the applet. It allows you to select a file and view who is using that file. The applet also lets you send a message to a file's users and displays a report of how the Send Message functioned.

DSRAZOR for eDirectory/NDS and NetWare Ready-to-Run Applets

Category: ZENworks Maintenance

The applets in this section are useful for maintaining your ZENworks objects. They can be used with ZENworks version 7 or below.

Add/Delete ZEN (NAL) Apps from Users

[NAL_ADD2.DSR]

This applet lists all Users, Groups and other objects that can have NAL/ZEN Application associations. It allows adding or removing NAL App associations from those objects. When adding an association, the applet currently searches your whole Tree to find the Applications that are available. If you do not want it to find all the Applications in the whole Tree, the applet can be modified to only show the Applications located in or beneath a specified container.

Copy ZEN Objects (Within Same Tree)

[COPYZ43.DSR]

This is an intelligent object copy for ZENworks packages and applications. This applet can be modified to work with any eDirectory/NDS object, such as groups.

Inherited NAL Applications

[NAL4.DSR]

Lists inherited NAL applications for a selected user. Lists all users in a selected group and inherited NAL applications common to all members.

NAL Objects and Associations

[NALASC1B.DSR]

Finds all NAL objects with associations. You can display NAL objects in a ListView or a TreeView. Select a NAL object to view its associations.

NAL Objects and Details

[NALLIST2.DSR]

Finds all NAL objects within a selected container branch and displays their details. Select a NAL object to view its contacts.

NAL Objects Search by Description

[NALSRCH.DSR]

Queries NAL objects based on an attribute. You can query for a specific caption, contact, or description. Select a NAL object to view its contacts.

NAL Objects with NO Associations

[NALOASO3.DSR]

Finds NAL objects with no associations. Select a NAL object to view its contacts.

DSRAZOR for eDirectory/NDS and NetWare Ready-to-Run Applets

NAL Objects with NO Folder Associations

[NAL-FOLD.DSR]

Finds NAL objects with no folder associations.

NAL Users and Their Associations

[NAL-USR2.DSR]

This applet will list your eDirectory/NDS users and show what NAL object associations have been defined for each.

ZEN Remote Control/Remote View (Tab)

[ZENRCRVT1.DSR]

This applet allows remote controlling or remote viewing ZEN workstations. This applet uses a Tab Control. The applet can be modified to be limited to specific containers/workstations, to change from the Z:\ drive to another drive, or to use the Zero Privilege Helpdesk **CVMONE.NLM**. The applet can be delegated to Helpdesk or other staff as an EXE.

ZEN Remote Control / Remote View by User

[ZENRCRVU3.DSR]

This applet allows remote controlling or remote viewing ZEN workstations. The applet can be modified to be limited to specific containers/workstations, to change from the Z:\ drive to another drive, or to use the Zero Privilege Helpdesk **CVMONE.NLM**. The applet can be delegated to Helpdesk or other staff as an EXE.

ZEN Remote Control / Remote View by Workstation

[ZENRCRV1.DSR]

This applet allows remote controlling or remote viewing ZEN workstations. The applet can be modified to be limited to specific containers/workstations, to change from the Z:\ drive to another drive, or to use the Zero Privilege Helpdesk **CVMONE.NLM**. The applet can be delegated to Helpdesk or other staff as an EXE.

ZEN Workstations and Details

[ZENDET1.DSR]

This applet will help you quickly find and document all ZENworks workstation objects in your eDirectory/NDS Tree. You also have the option to delete selected workstation objects.