



DSRAZOR Packaged Applets

DSRAZOR provides hundreds of modular tools (called *services*) you can use to construct your own applets to maintain and report on your eDirectory/NDS network. However, DSRAZOR also provides over 140 applets constructed by our developers to help you get started. Use these applets as they are or modify them in the **Designer** to fit your needs. You can run the applets from the **Viewer**, the **Console**, or a command line.

Applets are saved as *.**cvm** files

In this section, applets' uses are explained, and necessary or valuable procedures for their uses are described. The applets are ordered in this section as they are in the **Console**:

- Assess NDS Security ([page 2](#))
- Query and Search NDS ([page 10](#))
- Helpdesk Examples ([page 13](#))
- NDS User Maintenance ([page 19](#))
- Examine Servers/Disk ([page 29](#))
- ZENworks Maintenance ([page 34](#))
- Bindery/Netware ([page 36](#))

[*Request the Report you need here*]

This option is available from the **Console** in most menu categories (all except Helpdesk Examples). The applets packaged with DSRAZOR already facilitate many of your eDirectory/NDS tasks. Once you are familiar with the services and control objects used in the packaged applets, you will be able to create almost any solution you need in less than 10 minutes. If you get stumped about how to approach a solution, this option provides information for requesting help building an applet you need.

Assess NDS Security

The applets available from this menu are useful for assessing and maintaining your eDirectory/NDS security. See Visual Click Software's website (www.visualclick.com) for information on our DSMETER solution for additional eDirectory/NDS security and auditing tools.

Accounts That Are Expired or Locked

Lists eDirectory/NDS accounts (within an eDirectory/NDS Tree or container) that are locked, disabled, or expired. [**explock2.cvm**]

Accounts That Have Never Logged In

Lists eDirectory/NDS user accounts (within an eDirectory/NDS Tree or container) that have never had a login. [**nologin4.cvm**]

Accounts Unused for Past 30 Days

Lists eDirectory/NDS user accounts (within an eDirectory/NDS Tree or container) with no login in the past 30 days. [**no1gn30a.cvm**]

Accounts with Password Problems

Lists eDirectory/NDS user accounts (within an eDirectory/NDS Tree or container) with one of the following irregularities:

- Minimum password length is not set
- No password is required
- Expiration interval has not been set or is greater than 30 days
- Expiration date/time has already expired
- The minimum password length is less than 8 characters

The criteria can be edited to fit your organization's password standards. [**pwdprob1.cvm**]

Accounts with Personal Login Scripts

Lists eDirectory/NDS user accounts (within an eDirectory/NDS Tree or container) with a personal login script. [**pers1gn1.cvm**]

Automated “Batch Mode” Report (Sample)

Creates an output file (comma-delimited) of the LAN board information of each server to which the user is attached.

This applet will not display an interface to the user. It will automatically create the file `OTFCSV2.CSV` in the directory from which this applet was run.

This applet serves as an example of any applet that saves its output to a file without first displaying it on screen. Sending output directly to a file can save time for large reports, and it allows you set it up to run unattended (like this applet) or scheduled (for example, using Microsoft Scheduler).

There is also a second window, not used by this applet, which *could* be used as an “Out-To-File” applet. It lists eDirectory/NDS users that have not logged in for the past 30 days that are in a container that you must define before use. [`otfcsv2.cvm`]

Containers with Login Scripts

Lists eDirectory/NDS containers (within an eDirectory/NDS Tree) with a login script. [`cntnlgn1.cvm`]

Containers with No Objects

Lists eDirectory/NDS containers (within an eDirectory/NDS Tree) that contain no objects (such as user, group, containers, servers, etc.). [`cntn0a.cvm`]

Document Access to Sensitive File System Directories

Lists *all* user objects with access to a directory and their rights, and how they obtained those file system rights (see [“How Were File System Rights Obtained” on page 5](#)). [`privher5.cvm`]

Document Account Security Details

Lists users (within a selected container and subcontainers) with the following security information:

- Enabled/disabled status
- Login-time restrictions (yes/no)
- Presence of a personal login script
- Number of maximum login attempts (concurrent connections)
- Station restrictions (network address restriction)
- Intruder lockout status
- Account expiration date
- Time/date of last login

Select [Root] to list all users in the eDirectory/NDS Tree. Consider modifying this applet in the **Designer** to add buttons to change any of these attributes for one selected user or for all users displayed. [`actstr.cvm`]

Document Effective File System Rights

Reports the effective file system rights for users. To use this applet, perform the following steps:

- 1 Select a container that holds the servers you want to query. Select [Root] to query the whole eDirectory/NDS Tree.
- 2 Specify a file name to save to. This generates a large `*.csv` file that lists for each directory the users who were directly assigned rights or inherited them by group, Container membership, etc.

NOTE: This step might take a long time.

- 3 Select users to display their effective file system rights. You will be prompted to enter the name of the `*.csv` file you created in Step 2. [`doceff4.cvm`]

Document Organizational Roles

Lists user objects (within an eDirectory/NDS Tree or container) and their organizational roles, or lists organization roles and their members.

[`orgrole1.cvm`]

Document Password Settings Strength

Lists users and conveniently displays the following information:

- Whether password is required
- Whether password must be unique
- Minimum password length
- Password expiration interval
- Whether user can change own password
- Maximum number of grace logins

Optionally, customize this applet in the **Designer** to manage the columns of password information that are displayed or add buttons to change the password attribute values (for one selected user or all users). See [“Change Selected Attributes for Users - Mass” on page 19](#). [`pwdstr.cvm`]

Find Accounts Unused for 30,90,180 Days

Lists user accounts that have not logged in the past 30, 90, or 180 days or accounts never logged in, or expired or disabled accounts. You can opt to smart delete accounts, which will delete the eDirectory/NDS user, home directory structure, and GroupWise account. [`3090a.cvm`]

How Were File System Rights Obtained

Determines how (assigned directly, group membership, etc.) an eDirectory/NDS object obtained rights to a selected file system object. [`trustway.cvm`]

Objects (All) with NDS S or W Rights

Finds all eDirectory/NDS objects that have trustees with [S]upervisor or [W]rite privileges.

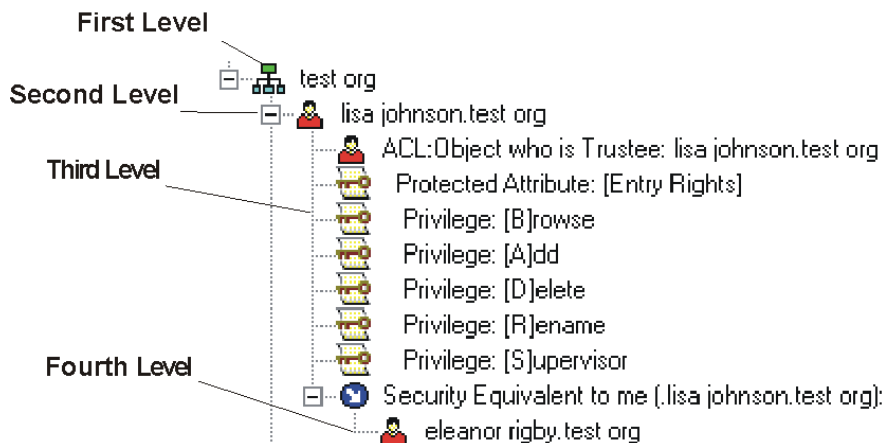
This applet will not list objects that are their own Trustees.

[`s_w_nds4.cvm`]

Objects (Container) with NDS S or W Rights

Finds all eDirectory/NDS container objects that have trustees with [S]upervisor or [W] privileges.

Figure 1-1



First Level of List:

eDirectory/NDS container objects with such trustees

Second Level of List:

eDirectory/NDS objects that are Supervisors

Third Level of List:

What specific eDirectory/NDS privileges they have

Fourth Level of List:

Users (or others) who are security equal to the object at the second level, and therefore are also Supervisors!

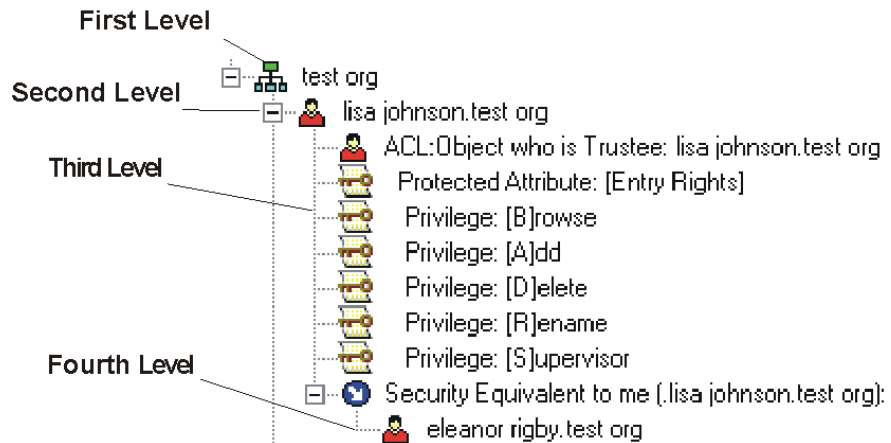
NOTE: This applet will not list objects that are their own trustees.

[s_w_nds6.cvm]

Objects (Container) with NDS S, C, or W Rights

Finds all eDirectory/NDS container objects that have trustees with [S]upervisor, [C]reate, or [W] privileges.

Figure 1-1

**First Level of List:**

eDirectory/NDS container objects with such trustees

Second Level of List:

eDirectory/NDS objects that are Supervisors

Third Level of List:

What specific eDirectory/NDS privileges they have

Fourth Level of List:

Users (or others) who are security equal to the object at the second level, and therefore are also Supervisors!

NOTE: This applet will not list objects that are their own trustees.

[swc_nds2.cvm]

Objects That Have an IRF Defined

Finds all eDirectory/NDS objects with an Inherited Rights Filter (IRF).

[irfdef1.cvm]

Set File System Rights + Create Directory

Assigns rights to a directory at the time of creation. [mdfsr.cvm]

Set File System Rights for Existing Directory

Assigns file system rights to eDirectory/NDS objects in an object-by-object manner. [**fsr.cvm**]

Set File System Rights of All Subdirectories

Assigns the same file system rights to existing file system trustees in the subdirectories of a selected directory (file system rights in the *selected* directory are excluded). [**massfsr.cvm**]

Where Is Account an NDS Trustee

Finds all eDirectory/NDS objects to which a *specified* object has rights. All trustee assignments are returned, even attribute specific ones.

Perform the following steps to use this applet:

- 1** Open the applet in the **Designer**.
- 2** From the **Select Window** dialog page, select **Where is specified object a trustee ?**, and click **OK**.
The selected window is displayed.
- 3** Right-click the TreeView control.
The **TreeView Services** dialog page is displayed.
- 4** Select the top service in the **Available Services** section, and click **Edit Rules** (in the lower right).
The **Rules For** dialog page is displayed.
- 5** Click **Expression** (in the **Edit** groupbox).
The **Expression For** dialog page is displayed.
- 6** In the **Manual Entry Text** field, enter the fully distinguished eDirectory/NDS name of the object you want to *specify*.
- 7** Click **OK** to close the dialog pages, save the applet, and run it.
[**whereis.cvm**]

Who Has Access To a Specific File

Searches selected eDirectory/NDS Tree for all users who have access to **SYS:SYSTEM\AUTOEXEC.NCF** on each server in the selected eDirectory/NDS Tree. Edit this applet to change the file queried.

[**auto2.cvm**]

Query and Search NDS

The applets available from this menu are useful for querying and searching your eDirectory/NDS structure.

Document BorderManager Access Rules



Displays selected the BorderManager access rules of a server or container.
[**bm2 . cvm**]

Document File Trustee Assignments

Finds all eDirectory/NDS users/groups in a selected container and lists all their (explicitly) assigned file system rights. All eDirectory/NDS volumes in your tree will be located, and you may save the volume list for later use (i.e., so you do not have to “rebuild” the list each time you want to check file system rights). You may edit the comma-delimited file to which the volume list is saved. [**usertr3 . cvm**]

Document Group Membership

Finds groups in an eDirectory/NDS Tree and lists their members. Select a container to display the groups in it. [**glista . cvm**]

Document GroupWise Distribution List Membership

Displays the members of a selected GroupWise distribution list.
[**gwd1doc . cvm**]

Document Trustees by Directory

Displays directories and the eDirectory/NDS objects that have (explicitly) assigned file system rights to those directories. Directories up to four levels deep in a volume are displayed. To display more levels, edit this applet in the **Designer** to change the appropriate rule. [**trbydir1 . cvm**]

Find Accounts with Expiring Passwords

Finds users whose password will expire either tomorrow or 7-14 days from now. To change the time span, edit this applet in the **Designer**.

[**pwdexp1.cvm**]

Find Duplicate NDS User Accounts

Produces a list of all users in your eDirectory/NDS Tree. Click **Find Duplicates in List** to “reduce” the list to just those user accounts with duplicate common names (CN). [**userdups.cvm**]

GroupWise Users and Their FIDs

Finds all GroupWise users in a selected container and lists the following information about them:

- GroupWise visibility
- FID
- Mailbox expiration
- Post office [**gwfidb2.cvm**]

Login Scripts - Archive

Archives login scripts from users, containers, profiles, etc., to a ***.CSV** file.

[**archls.cvm**]

NDS Partition Status Report

Finds all NetWare eDirectory/NDS servers beginning from the selected container and the partitions located on that server and their synchronization status data. [**partstat.cvm**]

Raw NDS Object View

Exposes all attributes and their values as well as technical details for any eDirectory/NDS object. [**rawnds1.cvm**]

Search by GroupWise FID

Queries eDirectory/NDS objects by GroupWise FID or partial string.

[**gwfid.s.cvm**]

Search for Any Object by Name

Queries eDirectory/NDS objects by full name or partial string.

[**srch1.cvm**]

Search for Users with Network Address(es)

Lists all users in a container branch that have a network address. Displays number of network address found, the first 3 network addresses, and last login time/date. [**netsrch1.cvm**]

Simple User Details View

Displays all users in a selected container and their group memberships, trustees assignments, and NAL associations. [**userw5.cvm**]

User Creation Time Report

Lists user objects and their create, last modified, and last login time/dates.

[**createt.cvm**]

User Phone Number Search

Finds a specified user and displays his phone number. This applet serves as a sample of any applet that searches for user objects and displays attributes. To display different attributes of the user object, edit this applet in the **Designer**.

Perform the following steps to use this applet:

- 1** Launch the applet and select an eDirectory/NDS Tree or container.
- 2** Click **Search for Users and their Phone Numbers**.

The **Search NDS For Any Objects Matching Selected Criteria** window is displayed.

- 3** In the **Enter Text Value For Search** field, type a user. Select **Find Partial Match** to query a string within a user name.
- 4** Click **Search**. [**phone1.cvm**]

Helpdesk Examples

While technically all applets can be Helpdesk solutions, the applets available from this menu are especially suited for this purpose. HelpDesk applets should be saved as **.EXE** files for use on workstations on which DSRAZOR has not been installed.

[Request the Helpdesk you need here]

Accesses an informational page for how to request a Helpdesk applet not available by default. [**vcs_cmhd.htm**]

Begin View in Helpdesk User's Context

Manages accounts only in a user's own division.

Starts the operating user's view in his own home context! Modify this applet in the **Designer** to fit your requirements. For example, create rules to filter the listed users by the length of login name, whether or not their account is locked, or if the login name does not contain "admin". [**hdusrctx.cvm**]

Change User Volume Space Restrictions Via NLM

Finds users with space restrictions on a selected volume, what those restrictions are, and how the space is being used.

Modifications to the User's disk space restrictions are routed to the **CVMONE.NLM** (v1.69 or later). **CVMONE.NLM** must be loaded at the server hosting the volume. [**volresn7.cvm**]

Clear Connections Via NLM

Lets the user of this applet clear the NetWare connections using **CVMONE.NLM** (v1.59 or later). **CVMONE.NLM** must be loaded on each server where connections are to be cleared. [**clravn1m.cvm**]

Create Users Via NLM

Lets users with Browse and Read rights create user objects in an eDirectory/NDS Tree using **CVMONE.NLM**. Before you can use this applet, you must to edit the applet to specify a server in the eDirectory/NDS Tree that has **CVMONE.NLM** loaded.

Before using this applet, perform the following steps:

- 1** Open this applet in the **Designer**.
- 2** Select **Helpdesk Example - Create User via NLM** and click **OK**.
The selected window is displayed.
- 3** Right-click the **Create User** button control.
The **Button Services** dialog page is displayed.
- 4** In the **Manual Entry Text** field, enter the name of a server in the eDirectory/NDS Tree that contains the **CVMONE.NLM** and click **OK**.
- 5** Save your changes to this applet. [**cuvnlm.cvm**]

Create User via NLM with Template

Lets the user of this applet create a user object using a template using **CVMONE.NLM** (v1.59 or later). **CVMONE.NLM** must be loaded on a referenced server. [**cuwtnlm1.cvm**]

GroupWise Dist. List Membership

This sample applet allows you to manage the membership of your GroupWise distribution lists. [**gwdlmem.cvm**]

GroupWise Password Management

A Helpdesk to administer GroupWise and eDirectory/NDS passwords.

Start this applet and click **Installation Notes** for prerequisites to running this applet. [**gwpwdm2.cvm**]

GroupWise User's Dist. List Mgmt

A Helpdesk to manage individual user GroupWise distribution lists. [**gwdlmgr1.cvm**]

List Users by Group Membership

Lists users with membership to a specified group. Before you can use this applet, perform the following steps to edit the applet in the **Designer** to specify the groups you want to query.

- 1** Open this applet in the **Designer**.
- 2** Right-click the **ListView** control.
The **ListView Columns** dialog page is displayed.
- 3** Click **Edit Rules**.
The **Rules For** dialog page is displayed.
- 4** Select a rule expression and click **Expression** (in the **Edit** groupbox).
The **Expression For** dialog page is displayed.
- 5** In the **Manual Entry Text** field, type the name of a group you want to query.
- 6** Click **OK**.
- 7** Repeat Steps 4 through 6 for each expression.
- 8** Save your changes to this applet. [`grp1sta.cvm`]

My Print Queue Management

Lets users manage their own print jobs. [`myqueue.cvm`]

My Profile - Current Activity

Displays who the user of this applet is to eDirectory/NDS, what servers the user is attached to, and the user's current drive mappings and printer captures. [`myprof11.cvm`]

NDPS + or - to Users Workstation via NLM

Lets applet users add or remove selected printers from the workstation of a user. Lets applet users set a selected printer as the default for the user's workstation. Lets applet users erase a printer from a user. [`hdndps2.cvm`]

NDPS Print Job Manager

Lists all printer agents and their status and allows management of a selected printer's jobs. [`ndps2a.cvm`]

Pass NDS Attribute as Parameter to EXE

Lists all accounts in a selected container branch that have a network address. This applet serves as a sample of how to pass almost any eDirectory/NDS attribute as a parameter to an **.EXE** file—this applet passes the network address. You must edit this applet in the **Designer** to specify the executable file.

Before using this applet, perform the following steps:

- 1 Open the applet in the **Designer**.
- 2 Highlight **Accounts with a Network Address** and click **OK**.
The selected window is displayed.
- 3 Right-click the **RUN YOUR EXE HERE** button control.
The **Button Services** dialog page is displayed.
- 4 In the **Manual Entry Text** field, type the filename of the executable to be used by this applet.
- 5 Click **OK** to close the dialog pages.
- 6 Save and run this applet. [**pass1.cvm**]

Print Queue Manager

Manages print jobs (hold, resume, delete) and sends a test page to a queue. You can customize this applet in the **Designer** to show only those the containers where print queues are kept. [**qman4.cvm**]

Search for Users to Manage

Finds any USER object (within an eDirectory/NDS Tree or a selected container and subcontainers) by name match, whether partial or exact. Manage selected users (change their password, view their login time restrictions, etc.). See [“User Mgmt + Disk Space Restrictions” on page 17](#). [**hdsrch.cvm**]

User Group Details

Lists groups (within an eDirectory/NDS Tree or a selected container and subcontainers) and displays details. [**helpd2.cvm**]

User Mgmt + Disk Space Restrictions

Finds users in a selected container and permits users to manage them. Edit this applet in the **Designer** to limit the list of users by numerous attributes including the length of their login name, whether or not their account is locked, if the login name does not contain “admin”, etc. See also [“Search for Users to Manage” on page 16](#). [[helpd1b.cvm](#)]

View NCP File Opens/Close Activity

Monitors file open/close activity to help you debug problems at a workstation if you are having trouble with an application running from the selected server. Works with IPX and IP. **CVMONE.NLM** must be loaded on a server in the associated eDirectory/NDS Tree.

Do the following to use this applet:

- 1 Select an attached server that has the **CVMONE.NLM** loaded and pick a connection to watch.
- 2 Click **Start NCP Monitoring** and **Stop NCP Monitoring** to toggle capturing their NCP packets to the server for open and closing files.

NOTE: Running this applet will slow down performance. [[packets.cvm](#)]

ZEN Remote Control / Remote View

Lets your Helpdesk access ZENworks workstations without having to use NWADMIN. You can customize this applet in the **Designer** to show only the ZENworks workstation containers rather than the entire eDirectory/NDS Tree.

This applet is also listed in the [ZENworks Maintenance](#) section. [[zenrcrv.cvm](#)]

Zero Priv – Import w/ Random Passwords

Lets a low-privileged-user import users with randomly generated passwords that he cannot find out. The passwords are generated and created via the **CVMONE.NLM** and are stored in the **SYS:SYSTEM** directory. [[zphdirp.cvm](#)]

Zero Priv – Use Preset Values

Includes two methods of using rules to prevent the solution user from violating business standards. For example, in this solution, the user can only assign grace logins to an account of exactly five, and the user can only reset the maximum concurrent logins to two. [`zphdps.cvm`]

Zero Privilege Helpdesk (Uses NLM)

Permits account changes using the `CVMONE.NLM`. Edit this applet's rules to suit your requirements. For example, limit the list of users by numerous attributes such as the length of their login name, whether or not their account is locked, if the login name does not contain "admin", etc. You can also change the buttons so they modify different attributes for the user.

Perform the following steps before using this applet:

- 1 Load `CVMONE.NLM` on one of the servers in the eDirectory/NDS Tree.
- 2 Open this applet in the **Designer**.
- 3 Highlight **Helpdesk Sample --Changes Via CVMONE.NLM--** and click **OK**.
- 4 Right-click on the word **Text** to the right of the buttons in the window. The **Text Services** dialog page is displayed.
- 5 In the **Text Caption** field and the **Manual Text Entry** field, enter the name of the file server where `CVMONE.NLM` is loaded.
- 6 Click **OK**.
Perform Steps 7 through 9 for each of the following **Button** controls:
 - **Reset Grace Logins via NLM**
 - **Change Password via NLM**
 - **Reset Intruder Lockout via NLM**
- 7 Right-click on the button control.
- 8 In the **Manual Text Entry** field, enter the name of the file server where the `CVMONE.NLM` was loaded.
- 9 Click **OK**.
- 10 Save your changes this applet as an **.EXE** file. [`helpdsk2.cvm`]

NDS User Maintenance

The applets available from this menu are useful for maintaining your eDirectory/NDS user objects.

Assign Users Ability to Self Manage

Lets you select users to self-manage their telephone numbers. This applet serves as an example of any applet that lets you select users to self-manage any eDirectory/NDS attribute. [[sac11.cvm](#)]

Change Home Directory Path/Not Volume

Allows changing the *path* of users' home directory without changing the volume. The affected user must already have a home directory.

If the new path does not exist, it will be created, and the user's current effective file system rights (to the "old" directory) will be applied so they can use their new home directory right away. [[homep3.cvm](#)]

Change Home Directory Volume/Not Path

Allows changing the *volume* for a user's home directory without changing the path. The affected user must already have a home directory.

If the new path does not exist, it will be created, and the user's current effective file system rights (to the "old" directory) will be applied so they can use their new home directory right away. [[homev3.cvm](#)]

Change Selected Attributes for Users - Mass

Changes attributes for individual users, all users (by using **Change Attributes for All users in container** button), or selected users (by using the **Change Attributes for "Selected" NDS Object** button). By default, it can change password, intruder lockout, login time restrictions, minimum password length, password expiration, OU (department), message server, home directory, and employee ID. Edit this applet in the **Designer** to customize which attributes are displayed and modified. [[masschg6.cvm](#)]

Change Selected Multi-Value Attributes

Lets you change multi-valued eDirectory/NDS object attributes of a selected eDirectory/NDS user. [`multval11.cvm`]

Create User Account with Template

This applet serves as a sample of an applet that creates users using pre-generated eDirectory/NDS templates. To use this applet, it must be modified in the **Designer** to specify the eDirectory/NDS templates to be used.

Perform the following steps to modify this applet:

- 1** Open this applet in the **Designer**.
- 2** Right-click the **Button** control labeled **Create NDS User with Template ONE**.

The **Button Services** dialog page box is displayed.

- 3** In the **Manual Entry Text** field, type the fully qualified eDirectory/NDS name for the appropriate eDirectory/NDS template. For example, **template.ou.org**)

OR

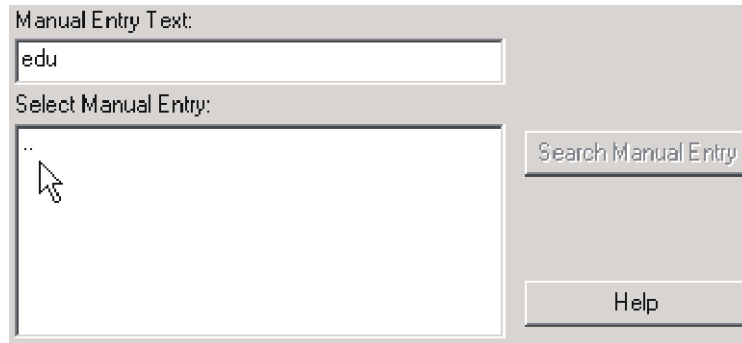
Perform the following steps to browse to the appropriate eDirectory/NDS template and have the **Manual Entry Text** field correctly populated automatically.

- a** Click **Search Manual Entry**.

The **Select Manual Entry** field displays the eDirectory/NDS templates and containers in the current container.

- b** To browse into a container displayed in the **Select Manual Entry** field, click the container.

To browse the container above the current container, click the **..** item.

Figure 1-3.

- 4 Click **OK**. [`cutemplt.cvm`]

Create User w/Runtime Chosen Template

Creates users using pre-generated eDirectory/NDS templates. Similar to [“Create User Account with Template” on page 20](#) except that the applet lets the user select the eDirectory/NDS template rather than using buttons that select particular templates automatically. [`cut3a.cvm`]

Create Users with NLM/Template/Attributes

This HelpDesk solution lets you create a user object with a template object. You can choose to use a template dynamically from the applet, or you choose to use a template assigned by editing applet in the **Designer**. [`cutanlm2.cvm`]

Create Users with Required Attributes

Creates a user with pre-defined attributes using a form. This forces filling in required attributes. Edit the form in the **Designer** to include almost any eDirectory/NDS attribute or to have it use a specified eDirectory/NDS template. [`cura2.cvm`]

Group Membership (Add, Create, Delete)

Creates a new group in a specified container and allows you to add and delete objects from eDirectory/NDS group membership. [`grp_ad2.cvm`]

Import Group Members from CSV File

Imports members to a group from a comma-delimited file. The file name must use a ***.CSV** extension. The file must use the following format:

```
Group, User
Group, User
```

where *Group* is a fully qualified eDirectory/NDS group name and *User* is a fully qualified eDirectory/NDS user name.

This applet serves as a sample of any Import Object applet. [**Grpmimp.cvm**]

Import NDS Password to New or Existing Accounts

Imports users' passwords and/or users from a comma-delimited file. Import using or not using an eDirectory/NDS template. The file name must use a ***.CSV** extension. The file must use the following format:

```
User, Password
User, Password
```

where *User* is a fully qualified eDirectory/NDS user name and *Password* is the user's password. For an example, see **PWD_EX.CSV** in the DSRAZOR install directory.

To import using an eDirectory/NDS template, edit the **Mass User Create with Template** button to use the appropriate template.

Perform the following procedure to edit the **Mass User Create with Template** button to use a template:

- 1** Open the applet in the **Designer**.
The **Select Window** dialog page is displayed.
- 2** Select **Import from selected CSV file with columns** and click **OK**.
The selected window is displayed.
- 3** Right-click the **Mass User Create with Template** button control.
The **Button Services** dialog page is displayed.
- 4** In the **Manual Entry Text** field, enter the appropriate template as described in Step 3 in [“Create User Account with Template” on page 20](#).
[**uimpp.cvm**]

Import NIMS List Users from CSV File

Imports NetWare Instant Messaging Service (NIMS) users from a comma-delimited file to a selected file. Also, creates or deletes List Users in the selected container. The imported file name must use a ***.CSV** extension. See **nims.csv** in the DSRAZOR installation directory as an example. The file must use the following format:

```
LoginName, FullName, ListUserOptions, AdminOptions
LoginName, FullName, ListUserOptions, AdminOptions
```

The *ListUserOptions* and the *ListUserAdminOptions* attributes define the options you see when you create a NIMS List User with NWADMIN.

In **nims.csv** (the example **.csv** file), the following values apply:

- ListUserOptions = 20 = Receive List Messages
- ListUserAdminOptions = 0 = Send copy of own postings

Click **Click here to find out more about List User options** for more details.

To find the values of your NIMS attributes for importation:

- 1** Create a NIMS List User with NWADMIN or ConsoleOne, and select the options you want.
- 2** Run **Raw NDS Object View** (in the **Query and Search NDS** section in the **Console**).
- 3** Use the applet to find the NIMS List User you just created and check the values for the following attributes:
 - ListUserOptions
 - ListUserAdminOptions
- 4** Use the attribute values in **.csv** file to import NIMS List Users.
[ui_nims.cvm]

Import Org Role Occupants from CSV

Imports *Organizational Roles* and the *Occupants* of those roles into your eDirectory/NDS and sets the security equivalence. [imporg.cvm]

Import Users + Attributes from CSV File

Imports users and their attributes from a comma-delimited file. Imports using (or not using) an eDirectory/NDS template. The file name must use a ***.csv** extension. The file must use the following format:

```
LoginName, LastName, Department, PhoneNumber
LoginName, LastName, Department, PhoneNumber
```

To import using an eDirectory/NDS template, edit the **Mass User Create with Template** button to use the appropriate template.

Perform the following procedure to edit the applet:

- 1** Open the applet in the **Designer**.
The **Select Window** dialog page is displayed.
- 2** Select **Import from selected CSV file with columns** and click **OK**.
The selected window is displayed.
- 3** Right-click the **Mass User Create with Template** button control.
The **Button Services** dialog page is displayed.
- 4** In the **Manual Entry Text** field, enter the appropriate template as described in Step 3 in [“Create User Account with Template” on page 20](#).
[uimp1.cvm]

Import Users w/Home Dir (HD=Attribute)

Lets the applet user import eDirectory/NDS users from a comma-delimited file and define their home directory at the same time. The home directory is automatically given the value of the named attribute.

By default, this applet imports from Excel-style comma-delimited files. To change to another comma-delimited format, edit the ListView control. See [“Import Users w/Home Dir \(HD=LoginID\)” on page 24](#) for how to edit this applet. [uimpoa.cvm]

Import Users w/Home Dir (HD=LoginID)

Lets the applet user import eDirectory/NDS users from a comma-delimited file and define their home directory at the same time. The home directory is automatically given the name of the users' login ID.

By default, this applet imports from Excel-style comma-delimited files. To change to another comma-delimited format, edit the `ListView` control:

Perform the following procedure to change the comma-delimited format:

- 1 Open the applet in the **Designer**.
The **Select Window** dialog page is displayed.
- 2 Select **Import from selected CSV file with columns CREATE USERNAME HOME DIR** and click **OK**.
The selected window is displayed.
- 3 Right-click the **ListView** control.
The **ListView Columns** dialog page is displayed.
- 4 Select the service **NDS:Receive CSV file, EXCEL STYLE [NO Quotes, Commas ONLY, no trailing comma] for Mass User [or Other Object] Create**.
- 5 Click **Edit**.
The **Edit Column** dialog page is displayed.
- 6 Select one of the **NDS:Receive CSV file** services.
- 7 Click **OK**.
The **Update Connected Controls** dialog page is displayed.
- 8 Click **OK**.
The **ListView Columns** dialog page is displayed.
- 9 Click **OK**. [`uimphd.cvm`]

Import Users w/ Runtime Selected Template

Imports users' attributes from a comma-delimited file using a selected eDirectory/NDS template. The file name must use a `*.CSV` extension. The file must use the following format:

```

LoginName, LastName, Department, PhoneNumber
LoginName, LastName, Department, PhoneNumber

```

[`uimpt1.cvm`]

Import Users w/Runtime Template via NLM

Uses Zero Privilege Helpdesk to import users' attributes from a comma-delimited file using a selected eDirectory/NDS template. The file name must use a ***.CSV** extension. The file must use the following format:

```
LoginName, LastName, Department, PhoneNumber  
LoginName, LastName, Department, PhoneNumber
```

[**uimpnlm1.cvm**]

Login Scripts Compare/Replace

Lets you select a login script as a “master” and then choose to *either*:

- Compare the master to *all* the login scripts in a selected container
OR
- Replace *all* the login scripts within a container with the master login script

IMPORTANT: This solution will compare/replace login scripts for *all* types of objects (user, container, etc.). To limit the login scripts to a particular type of object, edit the appropriate rule in this solution. [**lscorr.cvm**]

Maintain Users' Home Directory

Displays files in the home directory of a selected eDirectory/NDS user.
Manages files therein. Does not display sub-directories. [**userhd.cvm**]

Mass NDS Password Change

Allows changing the passwords of any or all the users in a container branch.
[**massp1.cvm**]

Search and Replace on Login Scripts

Searches a container branch for login scripts containing a typed attribute and replaces the attribute with another. [**sr1.cvm**]

Search and Replace on Text-based Attributes

Queries a container branch for users with a location attribute value that contains an entered string. Edit the button control to query for other attribute types. [**sr2.cvm**]

Smart Delete of User Accounts

Displays all users (except for those with “admin” in their name) in the selected container branch and deletes any or all of them with their home directory structure (all files and all subdirectories) and their GroupWise account. [**smartdel.cvm**]

Updating Users' Fullname

Updates a user’s full name attribute value. Select your container and then select the user to update. Edit the **Update Full Name** button control to update other text-based attribute values (e.g., phone number, last name, dept.) [**upfullnm.cvm**]

Updating Users' Phone Number

Updates a user’s phone number attribute value. Select your container and then select the user to update. Edit the **Update Phone Now** button control to update other text-based attribute values (e.g., full name, last name, dept.)

If there are multiple phone numbers defined, this applet might edit a different number than the one currently displayed. [**upphone.cvm**]

User Self-Update of GroupWise Dist. Lists

Allows an individual user with **Write** privilege to maintain their own GroupWise distribution lists. [**mygwdl.cvm**]

User Self-Update of NDS Password

Allows an individual user with **Write** privilege to maintain their own eDirectory/NDS password. [**usr_pwd.cvm**]

User Self-Update of NDS Values

Allows an individual user with **Write** privilege to maintain their own eDirectory/NDS details (title, department, phone, fax, and email).

[**myedit1.cvm**]

View Home Directory Sizes

Displays how much space is in use for selected users' home directories.

[**homed1b.cvm**]

Examine Servers/Disks

The applets available from this menu are useful for maintaining your examining your servers, disk spaces, and connections.

Compressed vs. Uncompressed Dir Sizes

Displays directory space restrictions and lets you change them. Shows the actual amount of compressed disk space in use and the disk space required if the directory were uncompressed. See [“Directory Space Restrictions” on page 29](#) and [“Disk Space Restrictions + Manage” on page 29](#).

[`dirsize1.cvm`]

Connection Stats (Bindery or NDS Logins)

Lists the connection statistics (time since last login, number of files opened, total request packets, etc.) of users on a selected server. [`srvcon2.cvm`]

Count NetWare Servers

Lists and counts the servers on the current network. [`scount5.cvm`]

Directory Space Restrictions

Displays the directory space restrictions and lets you change them. Shows the space in use and the space available, even on volumes to which you are not attached. See [“Compressed vs. Uncompressed Dir Sizes” on page 29](#) and [“Disk Space Restrictions + Manage” on page 29](#). [`dirspc3.cvm`]

Disk Space in Use, Files Owned/Unowned

Lists the volumes of the servers attached to the current workstation and displays who is using the space on the volume. Displays files with no owner and files owned by a selected user. [`volspc4.cvm`]

Disk Space Restrictions + Manage

Lists and lets you edit the space restrictions of users. Shows the space in use by each user and the space available. Users are listed by volume. See [“Compressed vs. Uncompressed Dir Sizes” on page 29](#) and [“Directory Space Restrictions” on page 29](#). [`volrest2.cvm`]

Document Server Security SET Parameters

Lists the server security SET parameters within a selected container branch.
[**sset1.cvm**]

Enterprise File Server Status

Demonstrates two effective methods to retrieve status information of your NetWare file servers. The information is displayed when an eDirectory/NDS Tree is selected and generating a report from a button control. [**bus4b.cvm**]

Enterprise Volume Space Report

Searches an eDirectory/NDS Tree for all volumes and displays the space in use, space available, and percent full. This utility includes the ability to calculate disk space owned on NSS volumes. Edit this applet in the **Designer** to allow only specific volumes into the list, such as those whose name contains "SYS". Save the information to a file and edit the file directly to include the volumes you wish to monitor. [**volview.cvm**]

File Extensions in Use - Count Each

Lists the file extensions on a selected volume and the number of each.
[**file-ex1.cvm**]

Find All Print Servers, Printers & Queues

Finds all printers and queues listed under print servers. [**pspq.cvm**]

Find All User Connections Using IPX

Lists all users in a container that have an IPX address. [**anyipx1.cvm**]

Find Directories with an Inheritance Filter

Searches a selected volume for directories with an Inheritance Filter (IF).
[**if2.cvm**]

Find Files Unused for Past 365 Days

Finds all files on a selected volume where the last access date (i.e., the last time the file was *opened*) is more than 365 days ago. [`files365.cvm`]

Hung Login Scripts (SYS:_NETWARE Files Open)

While a user is logging in to a server, a file is opened in `SYS:_NETWARE`. This applet lists all files open in this location. Use this applet to find hung login scripts. Requires `CVMONE.NLM` version 1.61 or later. [`sysnw.cvm`]

Logging File Usage

Lists each file in a selected directory, its owner, size, and access information. This applet serves as a sample for applets that choose a file and view its active users. You can then click on the **Log** button and log the active users. Edit this applet in the **Designer** to create an applet that logs users at a specified interval. As long as this screen is active, the logging will occur. [`logfile.cvm`]

NLM Interdependencies

Lists the NLMs on a selected server, the NLMs that are dependent on a selected NLM, and NLMs that require a selected NLM to be loaded before they can be loaded. This applet requires `CVMONE.NLM` be loaded on the affected servers. [`nllms2.cvm`]

Purgeable Space Report

Lists purgeable space on each volume of a selected server. Also lists space that cannot be purged. [`purger1.cvm`]

Send Commands to Server w/o RConsole

Enter a command line to send to a list of NetWare servers. RCONSOLE is not needed. However, the user must have **Console** operator privileges (or better) to use this application. [`ncf1.cvm`]

Simple Software Metering Example

Logs activity of selected file(s). This applet must be edited in the **Designer** to use it. See [“Specific, Interactive File Usage” on page 32](#).

Perform the following procedure to edit this applet for use:

- 1 Open this applet in the **Designer**.
- 2 Right-click the **ListView** control.
The **ListView Columns** dialog page is displayed.
- 3 Click **Edit Rules**.
The **Rules For** dialog page is displayed.

To track a single file, perform the following steps:

- 1 Click **Expression**.
The **Expression For** dialog page is displayed.
- 2 In the **Manual Entry Text** field, type in the whole path of the file to be tracked.

To track multiple files, perform the following steps for each extra file to be tracked:

- 1 In the **Add Expression** section, click **OR**.
The **Expression For** dialog page is displayed.
- 2 In the **Manual Entry Text** field, type in the whole path of the file to be tracked.

NOTE: If you use a wildcard in a file name (for example, `directory*.exe`), the applet tracks the first file that fits the wildcard. [`meter1.cvm`]

Simple Volume % Full Monitor

Displays the space in use for all the volumes in up to four different attached servers. Edit this applet in the **Designer** to display more servers.
[`volmon.cvm`]

Specific, Interactive File Usage

Monitors activity on files that are specified “on the fly” without having to edit the applet. Also displays the active users of a selected file. The files you select can be on any NetWare file server to which you can be authenticated. See [Simple Software Metering Example](#). [`filenow.cvm`]

View File Details Per Directory

Views files in a selected directory and their usage details. [**fileuse.cvm**]

Who Has Open Files by Connection

Displays connections (such as an eDirectory/NDS user) to attached servers and the files they are using or have open. Of those listed files, select a file to show other eDirectory/NDS users that have it open. Select a file a user has open and display who else has it open. Lets you send a message to a file's users. Displays a report on how the Send Message functioned. See [Who Has Selected File Open](#). [**who.cvm**]

Who Has Selected File Open

Displays files on attached servers. Select a file to display users that are using the file. Select a file and view who else is using that file. Lets you send a message to a file's users. Displays a report on how the Send Message functioned. See [Who Has Open Files by Connection](#). [**diropen.cvm**]

ZENworks Maintenance

The applets available from this menu are useful for maintaining your ZENworks objects.

Add/Delete ZEN (NAL) Apps from Users

Lists all user and group objects that *can* contain NAL associations, and permits adding or removing NAL associations from user and group objects. This applet serves as a sample of any applet that lets you to maintain your users' and groups' NAL application associations. [`nal_ad1.cvm`]

Copy ZEN Objects (Within Same Tree)

Displays ZENworks objects in a container and lets you copy the selected object(s) to any container within the same eDirectory/NDS Tree. Drag and drop the objects to be copied. This applet will report potential conflict for objects you copy. Edit this applet in the **Designer** to modify it to copy objects other than ZENworks objects.

NOTE: This applet will not resolve potential conflicts in copying other object types. [`copyz43.cvm`]

Inherited NAL Applications

Lists inherited NAL applications for a selected user. Lists all users in a selected group and automatically inherited NAL applications common to all members. [`nal4.cvm`]

NAL Objects and Associations

Finds all NAL objects with associations within a selected container branch. Choose to display NAL objects in a ListView or a TreeView. Select a NAL object to view its associations. [`nalasc1b.cvm`]

NAL Objects and Details

Finds all NAL objects within a selected container branch and displays their details. Select a NAL object to view its contacts. [`nallist2.cvm`]

NAL Objects Search by Description

Queries NAL objects based on attribute within a selected container branch.
Select a NAL object to view its contacts. [**nalsrch.cvm**]

NAL Objects with NO Associations

Find NAL objects with no associations within a selected container branch.
Select a NAL object to view its contacts. [**nal0aso3.cvm**]

NAL Objects with NO Folder Associations

Find NAL objects with no folder associations within a selected container branch. [**nal-fold.cvm**]

NAL Users and Their Associations

Lists users' objects within a selected container branch and their associations and the number of associations each. [**nal-usr2.cvm**]

ZEN Workstations and Details

Lists ZENworks workstations within a selected eDirectory/NDS Tree.
[**zendet1.cvm**]

Bindery/Netware 3.x

The applets available from this menu are useful for maintaining your bindery information.

Change User Passwords

Displays bindery-based user objects, when a selected user last logged in, and lets you change its password. You must have Supervisor rights over the bindery-based user object whose password is being changed. There is no prompt for the existing password such as you would typically use when giving a user rights to change their own password. [**bind_7.cvm**]

List Connection Statistics

Displays bindery login statistics on a selected attached server. [**bind_4.cvm**]

List Connections, File Open, Send Msg

Displays bindery-based user objects on attached servers and the files they are using or have open. Select a file a user has open and display who else is using it. Lets you send a message to a file's users. Displays a report on how the Send Message functioned. See [Who Has Selected File Open](#). [**bind_3.cvm**]

List Groups and Trustee Assignments

Displays groups on attached servers, their members, and their trustee assignments. [**bind_2.cvm**]

List Print Queues/Servers and Properties

Lists the print queues and print servers on all attached servers. [**bind_6.cvm**]

List Users and Their Properties

Displays a TreeView of all the user objects on all attached servers. Displays the details (groups, home directory, GUID, etc.) of the user objects. [**bind_1.cvm**]

List Users and Trustee Assignments

Displays user objects on attached servers and their trustee assignments.

[`bind_5.cvm`]

