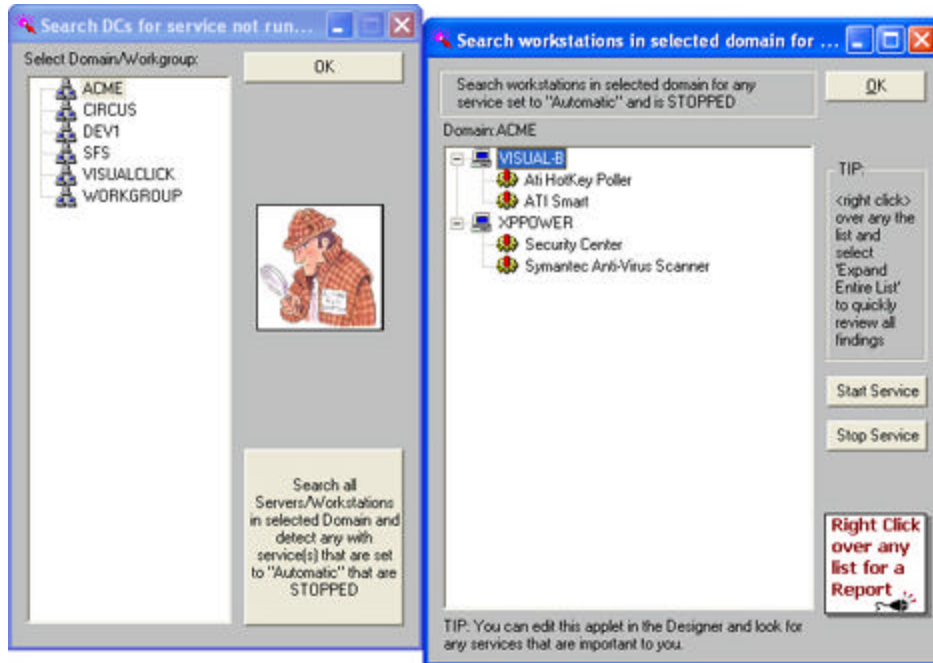


DSRAZOR Solution: System Dashboard



DSRAZOR provides a patented visual scripting environment that enables you to create the customized solution you need. With DSRAZOR's Designer you can customize your solution deciding what data to present and how it is to be displayed. The following details how flexible DSRAZOR can be in creating what you require.

Need a dashboard applet that searches and finds control panel services that are set to automatic but are stopped?

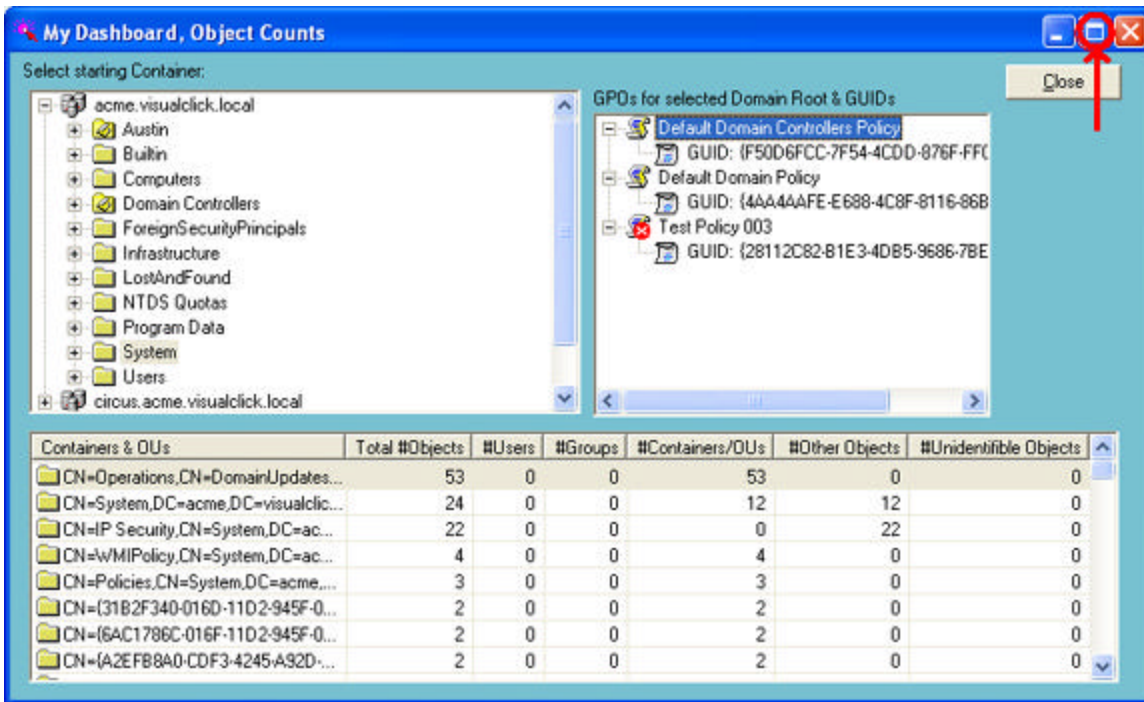


You can even place your own bitmap graphics into applets you design – here we have placed an inspector with a magnifying glass. Additionally, we have placed a graphic “Right Click over any list for a Report” – this is to remind you that you can receive an immediate print out of data shown in any list of any applet – this feature is automatically included. Data can be printed directly to a printer of your choice or saved to a file in CSV format for further processing.



DSRAZOR's visual scripting gives you the ability to focus on only the data that is important to you. Each custom applet you create can be saved as a stand-alone executable that can be distributed to others. All applets run independently, there is no 'common environment' that must first be installed and learned. By designing applets exactly as you need them you reduce your risk to security lapses due to “too much” data being available and “too many” ways to change the data. You also reduce your training requirements as the applets can be as simple as you require.

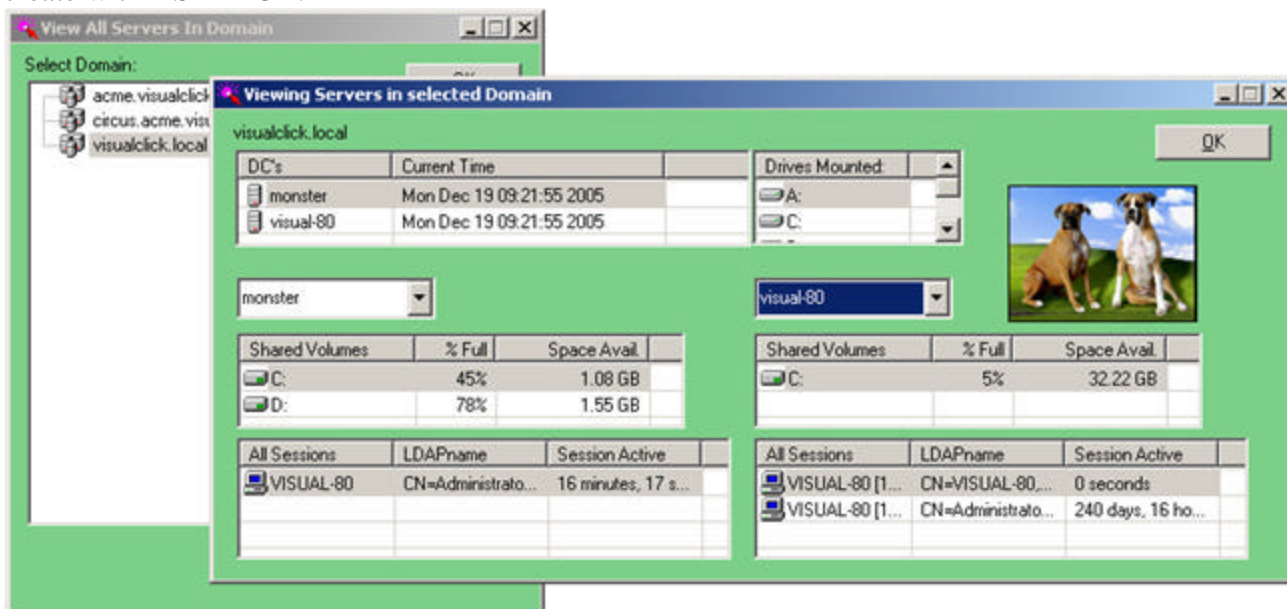
Another sample dashboard applet (below) helps you keep an eye on the number of users, groups, and other object types located in each of your containers as well as GPO GUIDs for the Domain Root.



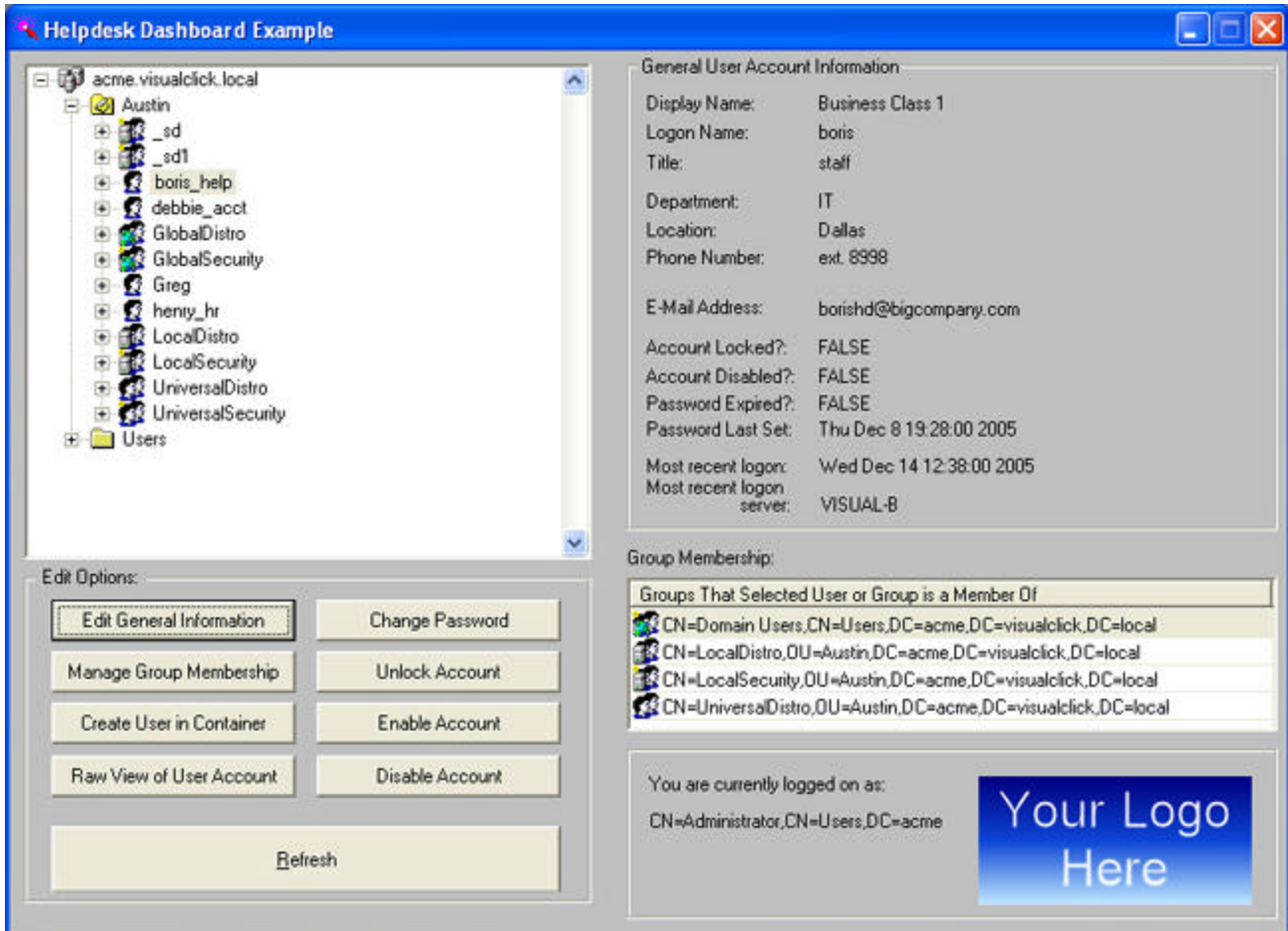
This applet includes a different background color, you can choose any color you want to help you visually distinguish your applets. Another option you can define is if the applet can be 'maximized' to full screen or if the window size is fixed (noted by red arrow and circle).



Designing your own view of server details dashboard is easily accomplished with DSRAZOR's visual scripting. The following image reveals a collection of live data from Domain Controllers. As configured, the data presented is updated once per minute – you can choose your own update frequency. The dropdown lists include all Domain Controllers and can be configured to list all regular servers and user workstations. The dropdown lists allow you to quickly change the machine where data is gathered. As described earlier you can add your own images and color to applets you visually create with DSRAZOR.



DSRAZOR gives you the power to visually create the applet you need. The following helpdesk dashboard applet includes restrictions to reveal just the 'Austin' and 'Users' containers. Additionally, the users display is refined to not show any accounts with 'admin' in the name. In the image below there are several buttons, some, such as Manage Group Membership open a new window to perform the requested operation, others, such as Enable Account simply perform the designated operation. With DSRAZOR you decide what data to show, how it will be shown, and what actions will be available.



As with any DSRAZOR applet you can save this applet as a stand-alone executable that you can distribute as needed.



Use DSRAZOR's flexible visual scripting to create the applets you need today!

Note:

The applets shown in this document were taken from actual customer examples.